



[Go to Product page](#)

Datasheet for ABIN524012
anti-COLEC10 antibody (AA 121-229)

1 Image

Overview

Quantity:	100 µg
Target:	COLEC10
Binding Specificity:	AA 121-229
Reactivity:	Human
Host:	Mouse
Clonality:	Monoclonal
Conjugate:	This COLEC10 antibody is un-conjugated
Application:	ELISA

Product Details

Purpose:	Mouse monoclonal antibody raised against a partial recombinant COLEC10.
Immunogen:	COLEC10 (NP_006429.1, 121 a.a. ~ 229 a.a) partial recombinant protein with GST tag. MW of the GST tag alone is 26 KDa.
Sequence:	CGRYRKFGVQ LDISIARLKT SMKFKNVIA GIRETEEFY YIVQEEKNYR ESLTHCRIRG GMLAMPKDEA ANTLIADYVA KSGFFRVFIG VNDLEREGQY MFTDNTPLQ
Clone:	4C1
Isotype:	IgG2a
Cross-Reactivity:	Human
Characteristics:	Antibody Reactive Against Recombinant Protein.

Target Details

Target:	COLEC10
Alternative Name:	COLEC10 (COLEC10 Products)
Background:	Full Gene Name: collectin sub-family member 10 (C-type lectin) Synonyms: CLL1,MGC118794,MGC118795
Gene ID:	10584
NCBI Accession:	NM_006438

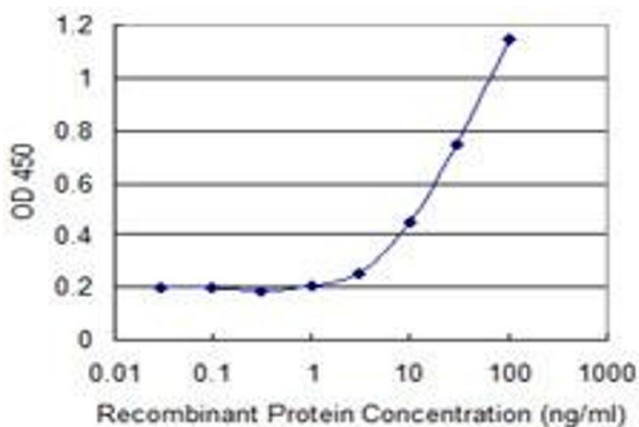
Application Details

Application Notes:	Optimal working dilution should be determined by the investigator.
Restrictions:	For Research Use only

Handling

Buffer:	In 1x PBS, pH 7.4
Handling Advice:	Aliquot to avoid repeated freezing and thawing.
Storage:	-20 °C
Storage Comment:	Store at -20°C or lower. Aliquot to avoid repeated freezing and thawing.

Images



ELISA

Image 1. Detection limit for recombinant GST tagged COLEC10 is 1 ng/ml as a capture antibody.