

Datasheet for ABIN524133
anti-Claudin 16 antibody (AA 1-73)



[Go to Product page](#)

3 Images

Overview

Quantity:	100 µg
Target:	Claudin 16 (CLDN16)
Binding Specificity:	AA 1-73
Reactivity:	Human
Host:	Mouse
Clonality:	Monoclonal
Conjugate:	This Claudin 16 antibody is un-conjugated
Application:	Western Blotting (WB), ELISA

Product Details

Purpose:	Mouse monoclonal antibody raised against a partial recombinant CLDN16.
Immunogen:	CLDN16 (NP_006571, 1 a.a. ~ 73 a.a) partial recombinant protein with GST tag. MW of the GST tag alone is 26 KDa.
Sequence:	MTSRTPLLVT ACLYYSYCNS RHLQQGVRKS KRPVFSHCQV PETQKTDTRH LSGARAGVCP CCHPDGLLAT MRD
Clone:	1F2
Isotype:	IgG2a
Cross-Reactivity:	Human
Characteristics:	Antibody Reactive Against Recombinant Protein.

Target Details

Target:	Claudin 16 (CLDN16)
Alternative Name:	CLDN16 (CLDN16 Products)
Background:	Full Gene Name: claudin 16 Synonyms: HOMG3,PCLN1
Gene ID:	10686
NCBI Accession:	NM_006580
Pathways:	Hepatitis C

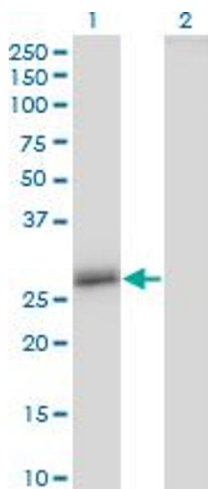
Application Details

Application Notes:	Optimal working dilution should be determined by the investigator.
Restrictions:	For Research Use only

Handling

Buffer:	In 1x PBS, pH 7.4
Handling Advice:	Aliquot to avoid repeated freezing and thawing.
Storage:	-20 °C
Storage Comment:	Store at -20°C or lower. Aliquot to avoid repeated freezing and thawing.

Images

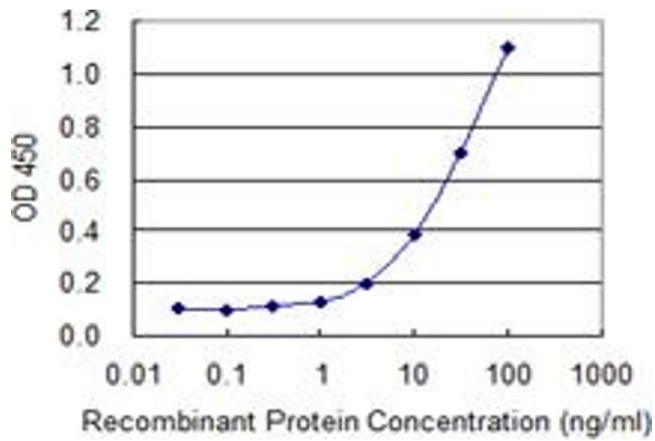


Western Blotting

Image 1. Western Blot analysis of CLDN16 expression in transfected 293T cell line by CLDN16 monoclonal antibody (M02), clone 1F2.

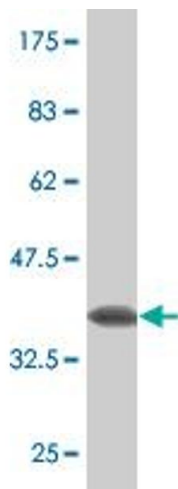
Lane 1: CLDN16 transfected lysate(33.8 KDa).

Lane 2: Non-transfected lysate.



ELISA

Image 2. Detection limit for recombinant GST tagged CLDN16 is 0.3 ng/ml as a capture antibody.



Western Blotting

Image 3. Western Blot detection against Immunogen (33.77 kDa).