



[Go to Product page](#)

Datasheet for ABIN524138

anti-CCT6B antibody (AA 1-530)

2 Images

Overview

Quantity:	50 µg
Target:	CCT6B
Binding Specificity:	AA 1-530
Reactivity:	Human
Host:	Mouse
Clonality:	Polyclonal
Conjugate:	This CCT6B antibody is un-conjugated
Application:	Western Blotting (WB)

Product Details

Purpose:	Mouse polyclonal antibody raised against a full-length human CCT6B protein.
Immunogen:	CCT6B (AAH27591.1, 1 a.a. ~ 530 a.a) full-length human protein.
Sequence:	MAAIKAVNSK AEVARAQAAL AVNICAARGL QDVLRTNLGP KGTMKMLASG AGDIKLTKDG NVLLDEMCIQ HPTASLIAKV ATAQDDVTGD GTTSNVLIIG ELLKQADLYI SEGLHPRIIA EGFEAAKIK A LEVLEEVKVT KEMKRKILLD VARTSLQTKV HAELADVLTE VVDSVLAVR RPGYPIDLFM VEIMEMKHKL GTDTKLIQGL VLDHGARHPD MKKRVEDAFI LICNVSLEYE KTEVNSGFFY KTAEEKEKLV KAERKFIEDR VQKIIDLKDK VCAQSNKGFV VINQKGIDPF SLDSLAKHGI VALRRAKRRN MERLSLACGG MAVNSFEDLT VDCLGHAGLV YEYTLGEEKF TFIEECVNPC SVTLLVKGPN KHTLTQVKDA IRDGLRAIKN AIEDGCMVPG AGAIEVAMAE ALVTYKNSIK GRARLGVQAF ADALLIIPKV LAQNAGYDPQ ETLVKVQAEH VESKQLVGVD LNTGEPMAVA DAGVWDNYCV KKQLLHCTV IATNILLVDE IMRAGMSSLK

Product Details

Cross-Reactivity:	Human
Characteristics:	Antibody reactive against mammalian transfected lysate.

Target Details

Target:	CCT6B
Alternative Name:	CCT6B (CCT6B Products)
Background:	Full Gene Name: chaperonin containing TCP1, subunit 6B (zeta 2) Synonyms: CCT-zeta-2,CCTZ-2,Cctz2,TCP-1-zeta-2,TSA303
Gene ID:	10693

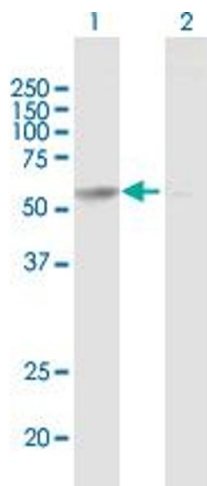
Application Details

Application Notes:	Optimal working dilution should be determined by the investigator.
Restrictions:	For Research Use only

Handling

Buffer:	In 1x PBS, pH 7.4
Handling Advice:	Aliquot to avoid repeated freezing and thawing.
Storage:	-20 °C
Storage Comment:	Store at -20°C or lower. Aliquot to avoid repeated freezing and thawing.

Images

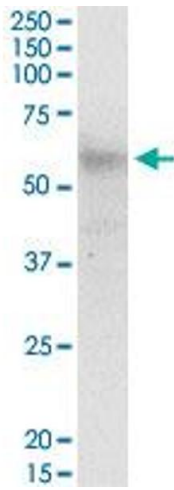


Western Blotting

Image 1. Western Blot analysis of CCT6B expression in transfected 293T cell line by CCT6B MaxPab polyclonal antibody.

Lane 1: CCT6B transfected lysate(58.3 kDa).

Lane 2: Non-transfected lysate.



Western Blotting

Image 2. CCT6B MaxPab polyclonal antibody. Western Blot analysis of CCT6B expression in human spleen.