



[Go to Product page](#)

Datasheet for ABIN524180
anti-GIPC1 antibody (AA 1-333)

1 Image

Overview

Quantity:	50 µg
Target:	GIPC1
Binding Specificity:	AA 1-333
Reactivity:	Human
Host:	Mouse
Clonality:	Polyclonal
Conjugate:	This GIPC1 antibody is un-conjugated
Application:	Western Blotting (WB)

Product Details

Purpose:	Mouse polyclonal antibody raised against a full-length human GIPC1 protein.
Immunogen:	GIPC1 (NP_005707.1, 1 a.a. ~ 333 a.a) full-length human protein.
Sequence:	MPLGLGRRKK APPLVENEEA EPGRGGLGVG EPGPLGGGGS GGPQMGLPPP PPALRPRLVF HTQLAHGSPT GRIEGFTNVK ELYGKIAEAF RLPTAEVMFC TLNTHKVDMD KLLGGQIGLE DFIFAHVKGQ RKEVEVFKSE DALGLTITDN GAGYAFIKRI KEGSVIDHIH LISVGMIEA INGQSLLGCR HYEVARLLKE LPRGRTFTLK LTEPRKAFDM ISQRSAGGRP GSGPQLGTGR GTLRLRSRGP ATVEDLPSAF EEKAIEKVDD LLESYMGIRD TELAATMVEL GKDKRNPDEL AEALDERLGD FAFPDEFVFD VWGAIGDAKV GRY
Cross-Reactivity:	Human
Characteristics:	Antibody reactive against mammalian transfected lysate.

Target Details

Target:	GIPC1
Alternative Name:	GIPC1 (GIPC1 Products)
Background:	Full Gene Name: GIPC PDZ domain containing family, member 1 Synonyms: C19orf3,GIPC,GLUT1CBP,Hs.6454,IIP-1,MGC15889,MGC3774,NIP,RGS19IP1,SEMCAAP,SYNECTIIN,SYNECTIN,TIP-2
Gene ID:	10755
NCBI Accession:	NM_005716
Pathways:	Dicarboxylic Acid Transport

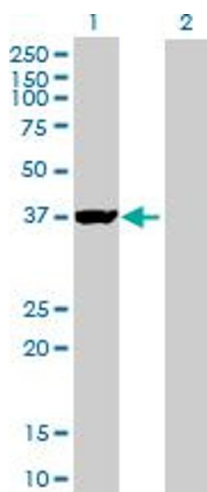
Application Details

Application Notes:	Optimal working dilution should be determined by the investigator.
Restrictions:	For Research Use only

Handling

Buffer:	In 1x PBS, pH 7.4
Handling Advice:	Aliquot to avoid repeated freezing and thawing.
Storage:	-20 °C
Storage Comment:	Store at -20°C or lower. Aliquot to avoid repeated freezing and thawing.

Images



Western Blotting

Image 1. Western Blot analysis of GIPC1 expression in transfected 293T cell line by GIPC1 MaxPab polyclonal antibody.

Lane 1: GIPC1 transfected lysate(36.63 KDa).

Lane 2: Non-transfected lysate.