



Datasheet for ABIN524198 **anti-ZNF266 antibody (AA 1-263)**



[Go to Product page](#)

1 Image

Overview

Quantity:	100 µg
Target:	ZNF266
Binding Specificity:	AA 1-263
Reactivity:	Human
Host:	Rabbit
Clonality:	Polyclonal
Conjugate:	This ZNF266 antibody is un-conjugated
Application:	Western Blotting (WB)

Product Details

Purpose:	Rabbit polyclonal antibody raised against a full-length human ZNF266 protein.
Immunogen:	ZNF266 (AAH17407.1, 1 a.a. ~ 263 a.a) full-length human protein.
Sequence:	MKIHVGEKPY ECKEKGIAFT RSSQLTEHLK THTAKDPFEC KICGKSFRNS SCLSDHFRIH TGIPYKCKD CGKAFTQNSD LTKHARTHSG ERPYECKECG KAFARSSRLS EHTRTHTGK PFECVKCGKA FAISSNLSGH LRIHTGKPF ECLECGKAFT HSSSLNNHMR THSAKKPFTC MECGKAFKFP TCVNLHMRIH TGEKPYKCKQ CGKSFSYSNS FQLHERHTG EKPYECKECG KAFSSSSSFR NHERRHADER LSA
Cross-Reactivity:	Human
Characteristics:	Antibody reactive against mammalian transfected lysate.

Target Details

Target:	ZNF266
Alternative Name:	ZNF266 (ZNF266 Products)
Background:	Full Gene Name: zinc finger protein 266 Synonyms: HZF1
Gene ID:	10781

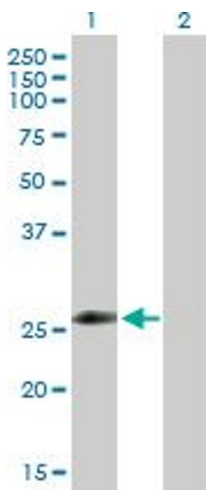
Application Details

Application Notes:	Optimal working dilution should be determined by the investigator.
Restrictions:	For Research Use only

Handling

Buffer:	In 1x PBS, pH 7.4
Handling Advice:	Aliquot to avoid repeated freezing and thawing.
Storage:	-20 °C
Storage Comment:	Store at -20°C or lower. Aliquot to avoid repeated freezing and thawing.

Images



Western Blotting

Image 1. Western Blot analysis of ZNF266 expression in transfected 293T cell line by ZNF266 MaxPab polyclonal antibody.

Lane 1: ZNF266 transfected lysate(29.90 KDa).

Lane 2: Non-transfected lysate.