

Datasheet for ABIN524239
anti-FRS2 antibody (AA 1-512)



[Go to Product page](#)

1 Image

Overview

Quantity:	50 µL
Target:	FRS2
Binding Specificity:	AA 1-512
Reactivity:	Human
Host:	Mouse
Clonality:	Polyclonal
Conjugate:	This FRS2 antibody is un-conjugated
Application:	Western Blotting (WB)

Product Details

Purpose:	Mouse polyclonal antibody raised against a full-length human FRS2 protein.
Immunogen:	FRS2 (AAH21562.1, 1 a.a. ~ 512 a.a) full-length human protein.
Sequence:	MGSCCSCPDK DTVPDNHRNK FKVINVDDDG NELGSGIMEL TDELILYTR KRDSVKWHYL CLRRYGYSN LFSFESGRRR QTGQGIFAFK CARAEELFNM LQEIMQNNSI NVVEEPPVER NNHQTELEVP RTPRTPPTPG FAAQNLPNGY PRYPSFGDAS SHPSSRHPSV GSARLPSVGE ESTHPLLVAE EQVHTYVNTT GVQEERKNRT SVHVPLEARV SNAESSTPKE EPSSIEDRDP QILLEPEGVK FVLGPTPVQK QLMEKEKLEQ LGRDQVSGSG ANNTEWDTGY DSDERRDAPS VNKLVEYENIN GLSIPSASGV RRGRLTSTST SDTQININSA QRRTALLNYE NLPSLPPVWE ARKLSRDEDD NLGPKTPSLN GYHNNLDPMH NYVNTENVTV PASAHKIEYS RRRDCTPTVF NFDIRRPSLE HRQLNYIQVD LEGGSDSDNP QTPKTPTTPL PQTPTTRTEL YAVIDIERTA AMSNLQKALP RDDGTSRKTR HNSTDLPMLA WK

Product Details

Cross-Reactivity:	Human
Characteristics:	Antibody reactive against mammalian transfected lysate.

Target Details

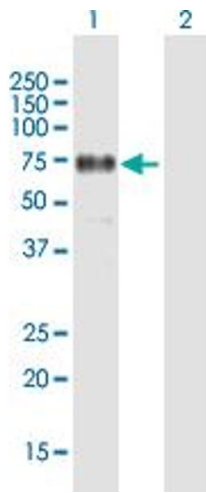
Target:	FRS2
Alternative Name:	FRS2 (FRS2 Products)
Background:	Full Gene Name: fibroblast growth factor receptor substrate 2 Synonyms: FRS2A,FRS2alpha,SNT,SNT-1,SNT1
Gene ID:	10818
Pathways:	Fc-epsilon Receptor Signaling Pathway , EGFR Signaling Pathway , Neurotrophin Signaling Pathway , Signaling Events mediated by VEGFR1 and VEGFR2

Application Details

Application Notes:	Optimal working dilution should be determined by the investigator.
Restrictions:	For Research Use only

Handling

Format:	Liquid
Buffer:	No additive
Preservative:	Without preservative
Handling Advice:	Aliquot to avoid repeated freezing and thawing.
Storage:	-20 °C
Storage Comment:	Store at -20°C or lower. Aliquot to avoid repeated freezing and thawing.



Western Blotting

Image 1. Western Blot analysis of FRS2 expression in transfected 293T cell line by FRS2 MaxPab polyclonal antibody.

Lane 1: FRS2 transfected lysate(56.32 KDa).

Lane 2: Non-transfected lysate.