

Datasheet for ABIN524240  
**anti-FRS2 antibody (AA 1-512)**



[Go to Product page](#)

1 Image

## Overview

Quantity:	100 µL
Target:	FRS2
Binding Specificity:	AA 1-512
Reactivity:	Human
Host:	Rabbit
Clonality:	Polyclonal
Conjugate:	This FRS2 antibody is un-conjugated
Application:	Immunoprecipitation (IP)

## Product Details

Purpose:	Rabbit polyclonal antibody raised against a full-length human FRS2 protein.
Immunogen:	FRS2 (AAH21562.1, 1 a.a. ~ 512 a.a) full-length human protein.
Sequence:	MGSCCSPDK DTVPDNHRNK FKVINVDDDG NELGSGIMEL TDELILYTR KRDSVKWHYL CLRRYGYSN LSFESGRRC QTGQGIFAFK CARAEELFNM LQEIMQNNSI NVVEEPPVER NNHQTELEVP RTPRTPPTPG FAAQNLPNGY PRYPSFGDAS SHPSSRHPSV GSARLPSVGE ESTHPLLVAE EQVHTYVNTT GVQEERKNRT SVHVPLEARV SNAESSTPKE EPSSIEDRDP QILLEPEGVK FVLGPTPVQK QLMEKEKLEQ LGRDQVSGSG ANNTEWDTGY DSDERRDAPS VNKLVEYENIN GLSIPSASGV RRGRLTSTST SDTQININSA QRRTALLNYE NLPSLPPVWE ARKLSRDEDD NLGPKTPSLN GYHNNLDPMH NYVNTENVTV PASAHKIEYS RRRDCTPTVF NFDIRRPSLE HRQLNYIQVD LEGGSDSDNP QTPKTPTTPL PQTPTTRTEL YAVIDIERTA AMSNLQKALP RDDGTSRKTR HNSTDLPMLA WK

## Product Details

---

Cross-Reactivity:	Human
Characteristics:	Antibody reactive against mammalian transfected lysate.

## Target Details

---

Target:	FRS2
Alternative Name:	FRS2 ( <a href="#">FRS2 Products</a> )
Background:	Full Gene Name: fibroblast growth factor receptor substrate 2 Synonyms: FRS2A,FRS2alpha,SNT,SNT-1,SNT1
Gene ID:	10818
Pathways:	<a href="#">Fc-epsilon Receptor Signaling Pathway</a> , <a href="#">EGFR Signaling Pathway</a> , <a href="#">Neurotrophin Signaling Pathway</a> , <a href="#">Signaling Events mediated by VEGFR1 and VEGFR2</a>

## Application Details

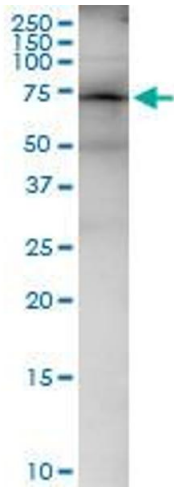
---

Application Notes:	Optimal working dilution should be determined by the investigator.
Restrictions:	For Research Use only

## Handling

---

Format:	Liquid
Buffer:	No additive
Preservative:	Without preservative
Handling Advice:	Aliquot to avoid repeated freezing and thawing.
Storage:	-20 °C
Storage Comment:	Store at -20°C or lower. Aliquot to avoid repeated freezing and thawing.



### Immunoprecipitation

**Image 1.** Immunoprecipitation of FRS2 transfected lysate using anti-FRS2 MaxPab rabbit polyclonal antibody and Protein A Magnetic Bead , and immunoblotted with FRS2 MaxPab mouse polyclonal antibody (B01) .