



[Go to Product page](#)

Datasheet for ABIN524245

anti-G Substrate antibody (AA 1-155)

3 Images

Overview

Quantity:	50 µg
Target:	G Substrate (Gsbs)
Binding Specificity:	AA 1-155
Reactivity:	Human
Host:	Mouse
Clonality:	Polyclonal
Conjugate:	This G Substrate antibody is un-conjugated
Application:	Western Blotting (WB), Immunofluorescence (IF)

Product Details

Purpose:	Mouse polyclonal antibody raised against a full-length human C7orf16 protein.
Immunogen:	C7orf16 (NP_006649.1, 1 a.a. ~ 155 a.a) full-length human protein.
Sequence:	MMSTEQMQPL EVSEDRLDKL DPRCSHLDDL SDQFIKDCDL KKKPRKGKNV QATLNVESDQ KKPRRKDTPA LHIPPFIGV FSEHLIKRYD VQERHPKGKM IPV LHNTDLE QKKPRRKDTP ALHMSPFAAG VTLLRDERPK AIVEDDEKDG DKIAI
Cross-Reactivity:	Human
Characteristics:	Antibody reactive against mammalian transfected lysate.

Target Details

Target:	G Substrate (Gsbs)
---------	--------------------

Target Details

Alternative Name:	C7orf16 (Gsbs Products)
Background:	Full Gene Name: chromosome 7 open reading frame 16 Synonyms: GSBS
Gene ID:	10842
NCBI Accession:	NM_006658

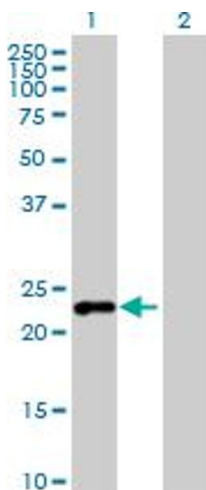
Application Details

Application Notes:	Optimal working dilution should be determined by the investigator.
Restrictions:	For Research Use only

Handling

Buffer:	In 1x PBS, pH 7.4
Handling Advice:	Aliquot to avoid repeated freezing and thawing.
Storage:	-20 °C
Storage Comment:	Store at -20°C or lower. Aliquot to avoid repeated freezing and thawing.

Images

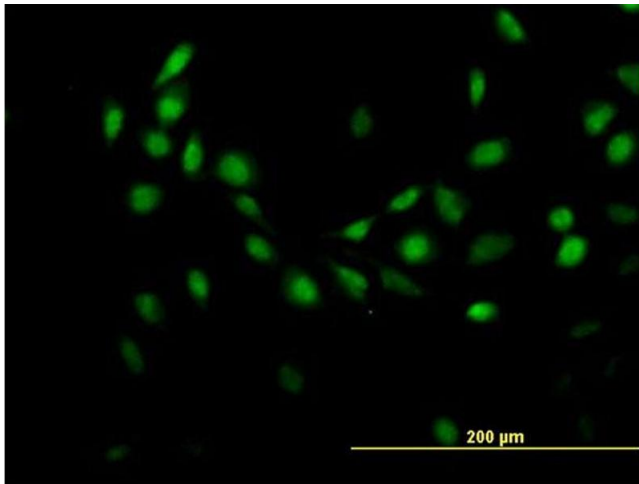


Western Blotting

Image 1. Western Blot analysis of C7orf16 expression in transfected 293T cell line by C7orf16 MaxPab polyclonal antibody.

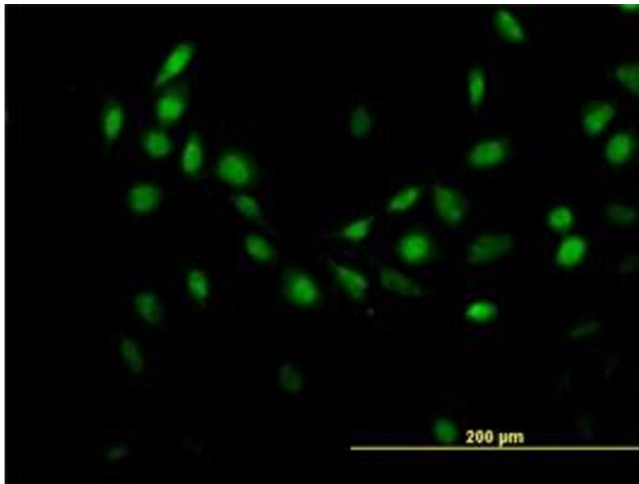
Lane 1: C7orf16 transfected lysate(17.05 kDa).

Lane 2: Non-transfected lysate.



Immunofluorescence

Image 2. Immunofluorescence of purified MaxPab antibody to C7orf16 on HeLa cell. [antibody concentration 10 µg/ml]



Immunofluorescence

Image 3. Immunofluorescence of purified MaxPab antibody to C7orf16 on HeLa cell. (antibody concentration 10 µg/mL)