



[Go to Product page](#)

Datasheet for ABIN524247

## anti-G Substrate antibody (AA 1-99)

### 2 Images

#### Overview

Quantity:	100 µg
Target:	G Substrate (Gsbs)
Binding Specificity:	AA 1-99
Reactivity:	Human
Host:	Mouse
Clonality:	Monoclonal
Conjugate:	This G Substrate antibody is un-conjugated
Application:	Western Blotting (WB), ELISA

#### Product Details

Purpose:	Mouse monoclonal antibody raised against a partial recombinant C7orf16.
Immunogen:	C7orf16 (NP_006649, 1 a.a. ~ 99 a.a) partial recombinant protein with GST tag. MW of the GST tag alone is 26 KDa.
Sequence:	MMSTEQMQPL ELSEDRLDKL DPRCSHLDDL SDQFIKCDL KKKPRKGKNV QATLNVEDSQ KKPRRKDTPA LHIPPFIGV FSEHLIKRYD VQERHPKGK
Clone:	3E6
Isotype:	IgG2a
Cross-Reactivity:	Human
Characteristics:	Antibody Reactive Against Recombinant Protein.

## Target Details

Target:	G Substrate (Gsbs)
Alternative Name:	C7orf16 ( <a href="#">Gsbs Products</a> )
Background:	Full Gene Name: chromosome 7 open reading frame 16 Synonyms: GSBS
Gene ID:	10842
NCBI Accession:	<a href="#">NM_006658</a>

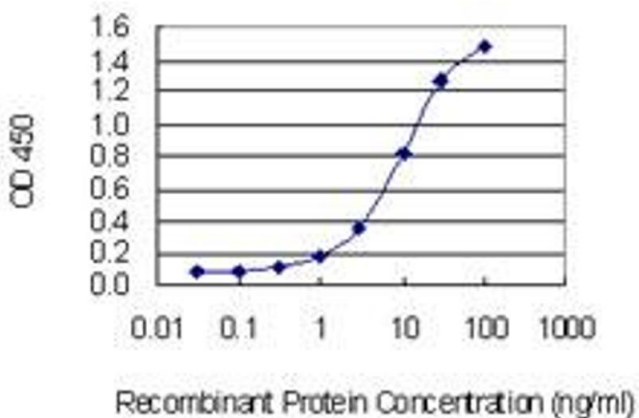
## Application Details

Application Notes:	Optimal working dilution should be determined by the investigator.
Restrictions:	For Research Use only

## Handling

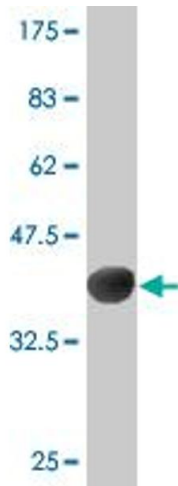
Buffer:	In 1x PBS, pH 7.4
Handling Advice:	Aliquot to avoid repeated freezing and thawing.
Storage:	-20 °C
Storage Comment:	Store at -20°C or lower. Aliquot to avoid repeated freezing and thawing.

## Images



### ELISA

**Image 1.** Detection limit for recombinant GST tagged C7orf16 is 0.3 ng/ml as a capture antibody.



### Western Blotting

**Image 2.** Western Blot detection against Immunogen (36.63 KDa) .