

Datasheet for ABIN524248  
**anti-PDE10A antibody (AA 242-333)**[Go to Product page](#)

## 1 Image

## Overview

Quantity:	100 µg
Target:	PDE10A
Binding Specificity:	AA 242-333
Reactivity:	Human
Host:	Mouse
Clonality:	Monoclonal
Conjugate:	This PDE10A antibody is un-conjugated
Application:	ELISA

## Product Details

Purpose:	Mouse monoclonal antibody raised against a partial recombinant PDE10A.
Immunogen:	PDE10A (NP_006652, 242 a.a. ~ 333 a.a) partial recombinant protein with GST tag. MW of the GST tag alone is 26 KDa.
Sequence:	GLAKQTELND FLLDVSKTYF DNIVAIDSLI EHIMIYAKNL VNADRCALFQ VDHKNKELYS DLFDIGEEKE GKPVFKKTKE IRFSIEKGIA GQ
Clone:	4E1
Isotype:	IgG1
Cross-Reactivity:	Human
Characteristics:	Antibody Reactive Against Recombinant Protein.

## Target Details

Target:	PDE10A
Alternative Name:	PDE10A ( <a href="#">PDE10A Products</a> )
Background:	Full Gene Name: phosphodiesterase 10A Synonyms: FLJ11894,FLJ25677,HSPDE10A
Gene ID:	10846
NCBI Accession:	<a href="#">NM_006661</a>
Pathways:	<a href="#">cAMP Metabolic Process</a>

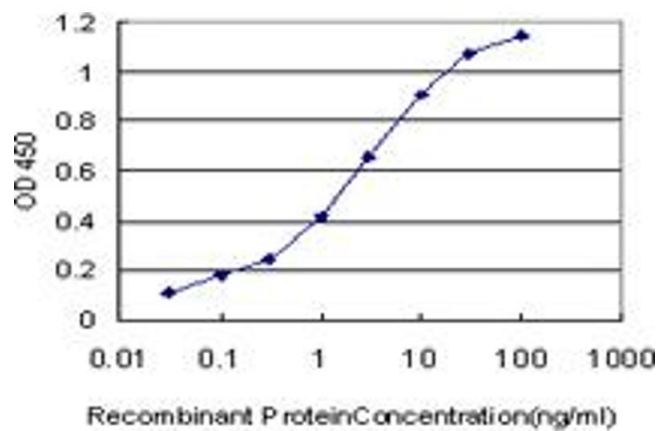
## Application Details

Application Notes:	Optimal working dilution should be determined by the investigator.
Restrictions:	For Research Use only

## Handling

Buffer:	In 1x PBS, pH 7.4
Handling Advice:	Aliquot to avoid repeated freezing and thawing.
Storage:	-20 °C
Storage Comment:	Store at -20°C or lower. Aliquot to avoid repeated freezing and thawing.

## Images



### ELISA

**Image 1.** Detection limit for recombinant GST tagged PDE10A is approximately 0.03ng/ml as a capture antibody.