



[Go to Product page](#)

Datasheet for ABIN524262  
**anti-HCP5 antibody (AA 1-132)**

1 Image

Overview

Quantity:	100 µg
Target:	HCP5
Binding Specificity:	AA 1-132
Reactivity:	Human
Host:	Rabbit
Clonality:	Polyclonal
Conjugate:	This HCP5 antibody is un-conjugated
Application:	Western Blotting (WB)

Product Details

Purpose:	Rabbit polyclonal antibody raised against a full-length human HCP5 protein.
Immunogen:	HCP5 (NP_006665.2, 1 a.a. ~ 132 a.a) full-length human protein.
Sequence:	MLLRMSEHRN EALGNYLEMR LKSSFLRGLG SWKSNPLRLG GWTILLTLTM GQGEPGGPQG DPWVPHELLL PSLCDSSHAS SWGSGSITCA WRGGDSSSHP LVSGHILSNS PVAAVMCSSM GTHLSPFKGT LL
Cross-Reactivity:	Human
Characteristics:	Antibody reactive against mammalian transfected lysate.

Target Details

Target:	HCP5
---------	------

## Target Details

Alternative Name:	HCP5 ( <a href="#">HCP5 Products</a> )
Background:	Full Gene Name: HLA complex P5 Synonyms: D6S2650E,P5-1
Gene ID:	10866
NCBI Accession:	<a href="#">NM_006674</a>

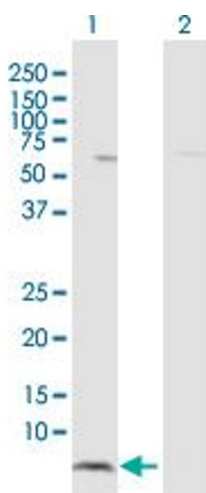
## Application Details

Application Notes:	Optimal working dilution should be determined by the investigator.
Restrictions:	For Research Use only

## Handling

Buffer:	In 1x PBS, pH 7.4
Handling Advice:	Aliquot to avoid repeated freezing and thawing.
Storage:	-20 °C
Storage Comment:	Store at -20°C or lower. Aliquot to avoid repeated freezing and thawing.

## Images



### Western Blotting

**Image 1.** Western Blot analysis of HCP5 expression in transfected 293T cell line by HCP5 MaxPab polyclonal antibody.

Lane 1: HCP5 transfected lysate(14.10 kDa).

Lane 2: Non-transfected lysate.