

Datasheet for ABIN524339
anti-RALBP1 antibody (AA 1-655)



[Go to Product page](#)

4 Images

Overview

Quantity:	100 µg
Target:	RALBP1
Binding Specificity:	AA 1-655
Reactivity:	Human
Host:	Rabbit
Clonality:	Polyclonal
Conjugate:	This RALBP1 antibody is un-conjugated
Application:	Western Blotting (WB), Proximity Ligation Assay (PLA)

Product Details

Purpose:	Rabbit polyclonal antibody raised against a full-length human RALBP1 protein.
Immunogen:	RALBP1 (NP_006779.1, 1 a.a. ~ 655 a.a) full-length human protein.
Sequence:	MTECFLPPTS SPSEHRRVEH GSGLTRTPSS EEISPTKFPG LYRTGEPSP HDILHEPPDV VSDDEKDHGK KKGKFKKKEK RTEGYAAFQE DSSGDEAESP SKMKRSKGIH VFKKPSFSKK KEKDFKIKEK PKEEKHKEEK HKEEKHKEKK SKDLTAADV KQWKEK KKKK KPIQEPEVPQ IDVPLNKPIF GIPLADAVR TMMYDGIRLP AVFRECIDYV EKYGMKCEGI YRVSGIKSKV DELKAAVDRE ESTNLEDYEP NTVASLLKQY LRDLPENLLT KELMPRFEEA CGRTTETEKV QEFQRLKEL PECNYLLISW LIVHMDHVIA KELETKMNIQ NISIVLSPTV QISNRVLYVF FTHVQELFGN VVLKQVMKPL RWSNMATMPT LPETQAGIKE EIRRQEFLN CLHRDLQGGI KDLSKEERLW EVQRILTALK RKLREAKRQE CETKIAQEIA SLSKEDVSKE EMNENEEVIN ILLAQENEIL TEQEELLAME QFLRRQIASE KEEIERLRAE IAEIQRQQH GRSETEEYSS ESESESEDEE ELQIILEDLQ RQNEELEIKN NHLNQAIHEE REAIIELRVQ LRLQMQRAK

Product Details

AEQQAQEDEE PEWRGGAVQP PRDGVLEPKA AKEQPKAGKE PAKPSPSRDR KETSI

Cross-Reactivity: Human, Rat

Characteristics: Antibody reactive against mammalian transfected lysate.

Target Details

Target: RALBP1

Alternative Name: RALBP1 ([RALBP1 Products](#))

Background: Full Gene Name: raIA binding protein 1
Synonyms: RIP1,RLIP1,RLIP76

Gene ID: 10928

NCBI Accession: [NM_006788](#)

Application Details

Application Notes: Optimal working dilution should be determined by the investigator.

Restrictions: For Research Use only

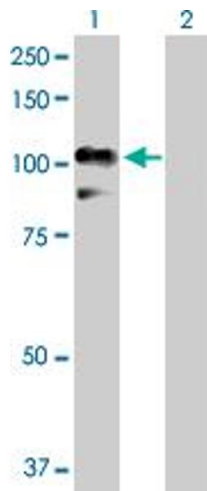
Handling

Buffer: In 1x PBS, pH 7.4

Handling Advice: Aliquot to avoid repeated freezing and thawing.

Storage: -20 °C

Storage Comment: Store at -20°C or lower. Aliquot to avoid repeated freezing and thawing.

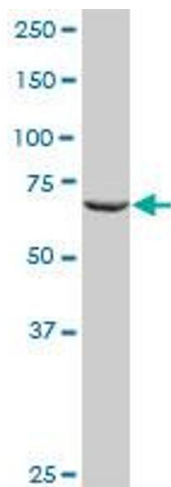


Western Blotting

Image 1. Western Blot analysis of RALBP1 expression in transfected 293T cell line by RALBP1 MaxPab polyclonal antibody.

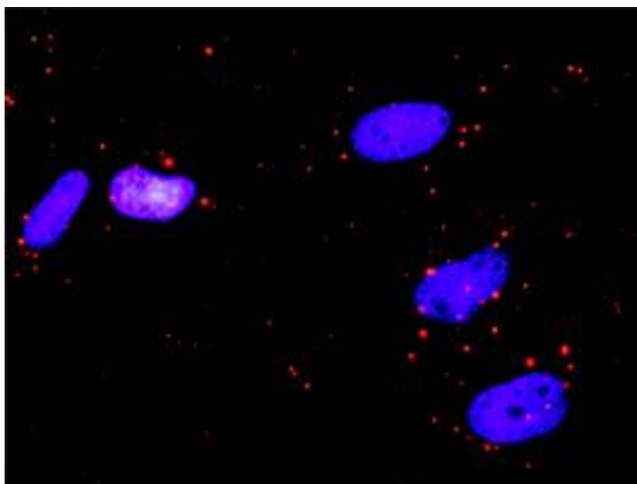
Lane 1: RALBP1 transfected lysate(76.10 KDa).

Lane 2: Non-transfected lysate.



Western Blotting

Image 2. RALBP1 MaxPab rabbit polyclonal antibody. Western Blot analysis of RALBP1 expression in HepG2.



Proximity Ligation Assay

Image 3. Proximity Ligation Analysis of protein-protein interactions between RALBP1 and IKBKG. HeLa cells were stained with anti-RALBP1 rabbit purified polyclonal 1:1200 and anti-IKBKG mouse monoclonal antibody 1:50. Each red dot represents the detection of protein-protein interaction complex, and nuclei were counterstained with DAPI (blue).

Please check the [product details page](#) for more images. Overall 4 images are available for ABIN524339.