



[Go to Product page](#)

Datasheet for ABIN524369

anti-CLP1 antibody (AA 1-425)

1 Image

Overview

Quantity:	100 µg
Target:	CLP1
Binding Specificity:	AA 1-425
Reactivity:	Human
Host:	Rabbit
Clonality:	Polyclonal
Conjugate:	This CLP1 antibody is un-conjugated
Application:	Western Blotting (WB)

Product Details

Purpose:	Rabbit polyclonal antibody raised against a full-length human CLP1 protein.
Immunogen:	CLP1 (NP_006822.1, 1 a.a. ~ 425 a.a) full-length human protein.
Sequence:	<p>MGEEANDDKK PTTKFELERE TELRFEVEAS QSVQLELLTG MAEIFGTELT RNKKFTFDAG AKVAVFTWHG CSVQLSGRTE VAYVSKDTPM LLYLNHTHTAL EQMRRQAEKE EERGPRVMV GPTDVGKSTV CRLLLNYAVR LGRRPTYVEL DVGQGSVSIP GTMGALYIER PADVEEGFSI QAPLVYHFGS TTPGTNIKLY NKITSRLADV FNQRCEVNRR ASVSGCVINT CGWWKGSYGQ ALVHAASAFE VDVVVVLDQE RLYNELKRDL PHFVRTVLLP KSGGVVERSK DFRRECRDER IREYFYGFGRG CFYPHAFNVK FSDVKIYKVG APTIPDSCLP LGMSQEDNQL KLVPTVTPGRD MVHLLSVST AEGTEENLSE TSVAGFIVVT SVDLEHQVFT VLSPAPRPLP KNFLLIMDIR FMDLK</p>
Cross-Reactivity:	Human
Characteristics:	Antibody reactive against mammalian transfected lysate.

Target Details

Target:	CLP1
Alternative Name:	CLP1 (CLP1 Products)
Background:	Full Gene Name: CLP1, cleavage and polyadenylation factor I subunit, homolog (<i>S. cerevisiae</i>) Synonyms: HEAB,hClp1
Gene ID:	10978
NCBI Accession:	NM_006831
Pathways:	Ribonucleoprotein Complex Subunit Organization

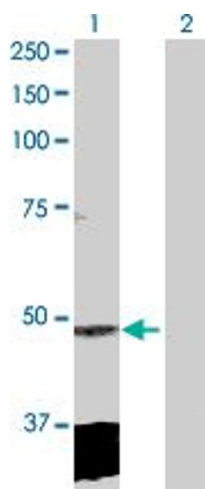
Application Details

Application Notes:	Optimal working dilution should be determined by the investigator.
Restrictions:	For Research Use only

Handling

Buffer:	In 1x PBS, pH 7.4
Handling Advice:	Aliquot to avoid repeated freezing and thawing.
Storage:	-20 °C
Storage Comment:	Store at -20°C or lower. Aliquot to avoid repeated freezing and thawing.

Images



Western Blotting

Image 1. Western Blot analysis of CLP1 expression in transfected 293T cell line by CLP1 MaxPab polyclonal antibody.

Lane 1: CLP1 transfected lysate(47.60 KDa).

Lane 2: Non-transfected lysate.