



[Go to Product page](#)

Datasheet for ABIN524374

anti-RAB32 antibody (AA 1-225)

3 Images

Overview

Quantity:	50 µg
Target:	RAB32
Binding Specificity:	AA 1-225
Reactivity:	Human
Host:	Mouse
Clonality:	Polyclonal
Conjugate:	This RAB32 antibody is un-conjugated
Application:	Western Blotting (WB)

Product Details

Purpose:	Mouse polyclonal antibody raised against a full-length human RAB32 protein.
Immunogen:	RAB32 (NP_006825.1, 1 a.a. ~ 225 a.a) full-length human protein.
Sequence:	MAGGGAGDPG LGAAAAPAPE TREHLFKVLV IGELGVGKTS IIKRYVHQLF SQHYRATIGV DFALKVLNWD SRLVRLQLW DIAGQERFGN MTRVYYKEAV GAFVVFDIR SSTFEAVLKW KSDLDSKVHL PNGSPIPAVL LANKCDQNKD SSQSPSQVDQ FCKEHGFAGW FETSAKDNIN IEEAARFLVE KILVNHQSFP NEENDVDKIK LDQETLRAEN KSQCC
Cross-Reactivity:	Human
Characteristics:	Antibody reactive against mammalian transfected lysate.

Target Details

Target:	RAB32
---------	-------

Target Details

Alternative Name:	RAB32 (RAB32 Products)
Background:	Full Gene Name: RAB32, member RAS oncogene family Synonyms:
Gene ID:	10981
NCBI Accession:	NM_006834

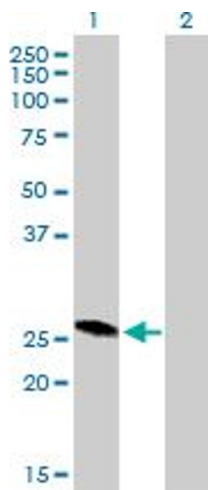
Application Details

Application Notes:	Optimal working dilution should be determined by the investigator.
Restrictions:	For Research Use only

Handling

Buffer:	In 1x PBS, pH 7.4
Handling Advice:	Aliquot to avoid repeated freezing and thawing.
Storage:	-20 °C
Storage Comment:	Store at -20°C or lower. Aliquot to avoid repeated freezing and thawing.

Images

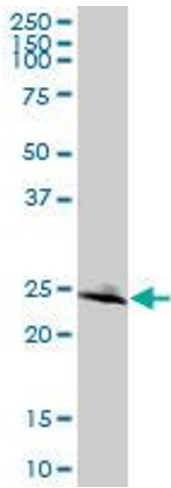


Western Blotting

Image 1. Western Blot analysis of RAB32 expression in transfected 293T cell line by RAB32 MaxPab polyclonal antibody.

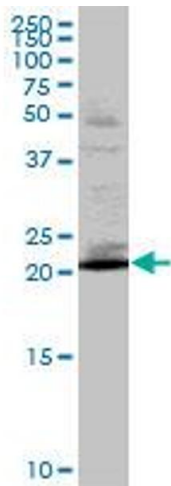
Lane 1: RAB32 transfected lysate(24.75 KDa).

Lane 2: Non-transfected lysate.



Western Blotting

Image 2. RAB32 MaxPab polyclonal antibody. Western Blot analysis of RAB32 expression in human kidney.



Western Blotting

Image 3. RAB32 MaxPab polyclonal antibody. Western Blot analysis of RAB32 expression in K-562.