



Datasheet for ABIN524383
anti-METAP2 antibody (AA 1-478)



[Go to Product page](#)

3 Images

Overview

Quantity:	50 µg
Target:	METAP2
Binding Specificity:	AA 1-478
Reactivity:	Human
Host:	Mouse
Clonality:	Polyclonal
Conjugate:	This METAP2 antibody is un-conjugated
Application:	Western Blotting (WB), Immunofluorescence (IF)

Product Details

Purpose:	Mouse polyclonal antibody raised against a full-length human METAP2 protein.
Immunogen:	METAP2 (NP_006829.1, 1 a.a. ~ 478 a.a) full-length human protein.
Sequence:	MAGVEEVAAS GSHLNGDLDP DDREEGAAS AEEAAKKRR KKKKSKGPSA AGEQEPDKES GASVDEVARQ LERSALEDKE RDEDEDGDG DGDGATGKKK KKKKKKRGPK VQTDPPSVPI CDLYPNGVFP KGQECEYPPT QDGR TAAWRT TSEEKALDQ ASEEIWNDFR EAAEAHRQVR KYVMSWIKPG MTMIEICEKL EDCSRKLIKE NGLNAGLAFP TGCSLNCAA HYTPNAGD TT VLQYDDICKI DFGTHISGRI IDCAFTVTFN PKYDTLLKAV KDATNTGIKC AGIDVRLCDV GEAIQEVMS YEVEIDGKTY QVKPIRNLNG HSIQYRIHA GKTVPVKG G EATRMEEGEV YAIETFGSTG KGVVHDDMEC SHYMKNFDVG HVP IRLPRTK HLLNVINENF GTLAFCCRWL DRLGESKYL M ALKNLCLDGI VDPYPLCDI KGSYTAQFEH TILLRPTCKE VVSRGDDY
Cross-Reactivity:	Human

Product Details

Characteristics: Antibody reactive against mammalian transfected lysate.

Target Details

Target: METAP2

Alternative Name: METAP2 ([METAP2 Products](#))

Background: Full Gene Name: methionyl aminopeptidase 2
Synonyms: MAP2,MNPEP,p67,p67eIF2

Gene ID: 10988

NCBI Accession: [NM_006838](#)

Pathways: [Regulation of G-Protein Coupled Receptor Protein Signaling](#)

Application Details

Application Notes: Optimal working dilution should be determined by the investigator.

Restrictions: For Research Use only

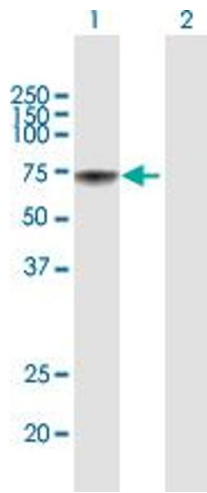
Handling

Buffer: In 1x PBS, pH 7.4

Handling Advice: Aliquot to avoid repeated freezing and thawing.

Storage: -20 °C

Storage Comment: Store at -20°C or lower. Aliquot to avoid repeated freezing and thawing.

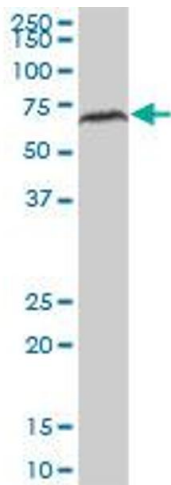


Western Blotting

Image 1. Western Blot analysis of METAP2 expression in transfected 293T cell line by METAP2 MaxPab polyclonal antibody.

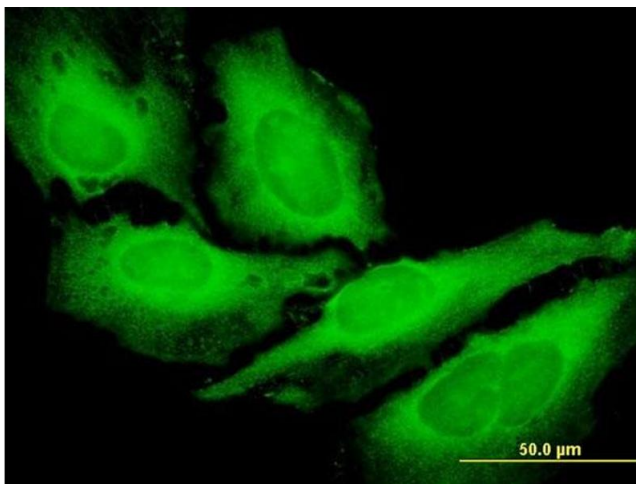
Lane 1: METAP2 transfected lysate(52.58 KDa).

Lane 2: Non-transfected lysate.



Western Blotting

Image 2. METAP2 MaxPab polyclonal antibody. Western Blot analysis of METAP2 expression in human liver.



Immunofluorescence

Image 3. Immunofluorescence of purified MaxPab antibody to METAP2 on HeLa cell. [antibody concentration 10 ug/ml]