



[Go to Product page](#)

Datasheet for ABIN524394

anti-SLC27A2 antibody (AA 25-123)

2 Images

Overview

Quantity:	100 µg
Target:	SLC27A2
Binding Specificity:	AA 25-123
Reactivity:	Human
Host:	Mouse
Clonality:	Monoclonal
Conjugate:	This SLC27A2 antibody is un-conjugated
Application:	ELISA, Immunofluorescence (IF)

Product Details

Purpose:	Mouse monoclonal antibody raised against a partial recombinant SLC27A2.
Immunogen:	SLC27A2 (NP_003636, 25 a.a. ~ 123 a.a) partial recombinant protein with GST tag. MW of the GST tag alone is 26 KDa.
Sequence:	YFFQDIGYFL KVAAVGRRVR SYGQRRPART ILRAFLEKAR QTPHKPFLLF RDETLTYAQV DRRSNQVARA LHDHLGLRQG DCVALLMGNE PAYVWLWLG
Clone:	1F1
Isotype:	IgG2a
Cross-Reactivity:	Human
Characteristics:	Antibody Reactive Against Recombinant Protein.

Target Details

Target:	SLC27A2
Alternative Name:	SLC27A2 (SLC27A2 Products)
Background:	Full Gene Name: solute carrier family 27 (fatty acid transporter), member 2 Synonyms: ACSVL1,FACVL1,FATP2,HsT17226,VLACS,VLCS,hFACVL1
Gene ID:	11001
NCBI Accession:	NM_003645
Pathways:	Monocarboxylic Acid Catabolic Process , SARS-CoV-2 Protein Interactome

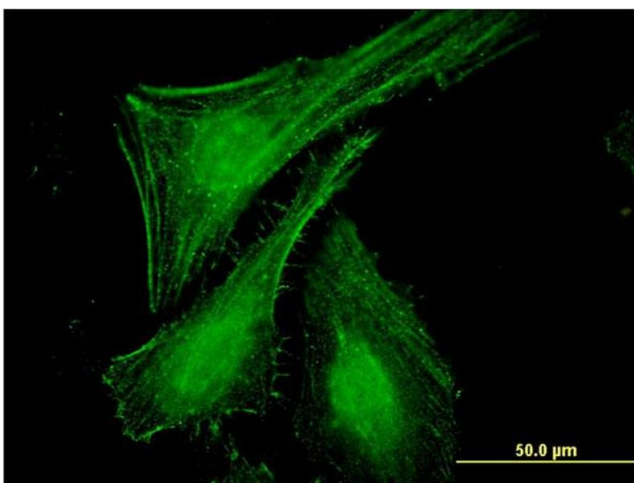
Application Details

Application Notes:	Optimal working dilution should be determined by the investigator.
Restrictions:	For Research Use only

Handling

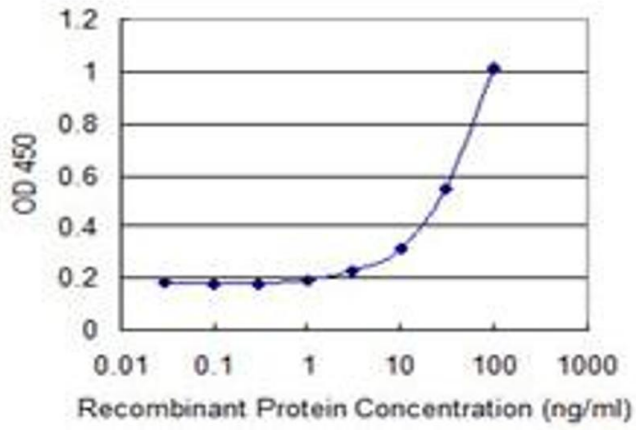
Buffer:	In 1x PBS, pH 7.4
Handling Advice:	Aliquot to avoid repeated freezing and thawing.
Storage:	-20 °C
Storage Comment:	Store at -20°C or lower. Aliquot to avoid repeated freezing and thawing.

Images



Immunofluorescence

Image 1. Immunofluorescence of monoclonal antibody to SLC27A2 on HeLa cell. [antibody concentration 10 ug/ml]



ELISA

Image 2. Detection limit for recombinant GST tagged SLC27A2 is 1 ng/ml as a capture antibody.