

Datasheet for ABIN524396
anti-KIF2C antibody (AA 1-725)



[Go to Product page](#)

2 Images

Overview

Quantity:	100 µg
Target:	KIF2C
Binding Specificity:	AA 1-725
Reactivity:	Human
Host:	Rabbit
Clonality:	Polyclonal
Conjugate:	This KIF2C antibody is un-conjugated
Application:	Western Blotting (WB)

Product Details

Purpose:	Rabbit polyclonal antibody raised against a full-length human KIF2C protein.
Immunogen:	KIF2C (AAH14924.1, 1 a.a. ~ 725 a.a) full-length human protein.
Sequence:	MAMDSSLQAR LFPGLAIKIQ RSNGLIHSAN VRTVNLEKSC VSVEWAEGGA TKGKEIDFDD VAAINPELLQ LLPLHPKDNL PLQENVTIQK QKRRSVNSKI PAPKESLRSR STRMSTVSEL RITAEQENDME VELPAAANSR KQFSVPPAPT RPSCPAVAEI PLRMVSEEME EQVHSIRGSS SANPVNSVRR KSCLVKEVEK MKNKREEKKA QNSEMRMKRA QEYDSSFNPW EFARMIKEFR ATLECHPLTM TDPIEEHRIC VCVRKRPLNK QELAKKEIDV ISIPSKCLLL VHEPKLKVDL TKYLENQAFD FDFAFDETAS NEVVYRFTAR PLVQTIFEGG KATCFAYGQT GSGKTHTMGG DLGKAQNAS KGIYAMASRD VFLLKNQPCY RKLGLEVVYV FFEIYNGKLF DLLNKKAKLR VLEDGKQQVQ VVGLQEHLVN SADDVIKID MGSACRTSGQ TFANSNSSRS HACFQILRA KGRMHGKFSL VDLAGNERGA DTSSADRQTR MEGAEINKSL LALKECIRAL GQNKAHTPFR ESKLTQVLRD SFIGENSRTC MIATISPGIS SCEYTLNLT LR YADRVKELSP HSGPSGEQLI

Product Details

QMETEEMEAC SNGALIPGNL SKEEEEELSSQ MSSFNEAMTQ IRELEEKAME ELKEIIQQGP
DWLELSEMTE QPDYDLETFV NKAESALAAQ AKHFSALRDV IKALRLAMQL EEQASRQISS KKRPO

Cross-Reactivity: Human

Characteristics: Antibody reactive against mammalian transfected lysate.

Target Details

Target: KIF2C

Alternative Name: KIF2C ([KIF2C Products](#))

Background: Full Gene Name: kinesin family member 2C
Synonyms: KNSL6,MCAK

Gene ID: 11004

Pathways: [Microtubule Dynamics](#)

Application Details

Application Notes: Optimal working dilution should be determined by the investigator.

Restrictions: For Research Use only

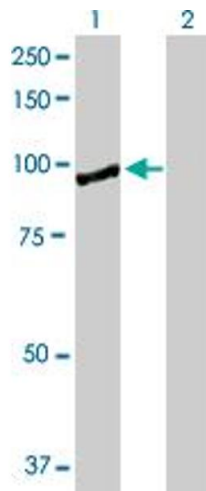
Handling

Buffer: In 1x PBS, pH 7.4

Handling Advice: Aliquot to avoid repeated freezing and thawing.

Storage: -20 °C

Storage Comment: Store at -20°C or lower. Aliquot to avoid repeated freezing and thawing.

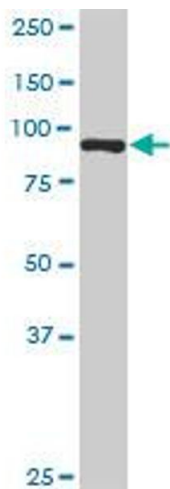


Western Blotting

Image 1. Western Blot analysis of KIF2C expression in transfected 293T cell line by KIF2C MaxPab polyclonal antibody.

Lane 1: KIF2C transfected lysate(81.30 kDa).

Lane 2: Non-transfected lysate.



Western Blotting

Image 2. KIF2C MaxPab rabbit polyclonal antibody. Western Blot analysis of KIF2C expression in K-562.