



[Go to Product page](#)

Datasheet for ABIN524405  
**anti-TMED1 antibody (AA 1-227)**

1 Image

### Overview

Quantity:	50 µg
Target:	TMED1
Binding Specificity:	AA 1-227
Reactivity:	Human
Host:	Mouse
Clonality:	Polyclonal
Conjugate:	This TMED1 antibody is un-conjugated
Application:	Western Blotting (WB)

### Product Details

Purpose:	Mouse polyclonal antibody raised against a full-length human TMED1 protein.
Immunogen:	TMED1 (NP_006849.1, 1 a.a. ~ 227 a.a) full-length human protein.
Sequence:	MMAAGAALAL ALWLLMPPVE VGGAGPPPIQ DGEFTFLLPA GRKQCFYQSA PANASLETEY QVIGGAGLDV DFTLESPQGV LLVSES RKAD GVHTVEPTEA GDYKLCFDNS FSTISEKLVF FELIFDSLQD DEEVEGWAEA VEPEEMLDVK MEDIKESIET MRTRLERSIQ MLTLLRAFEA RDRNLQEGNL ERVNFWSAVN VAVLLLAVL QVCTLKRFFQ DKRPVPT
Cross-Reactivity:	Human
Characteristics:	Antibody reactive against mammalian transfected lysate.

### Target Details

Target:	TMED1
---------	-------

## Target Details

Alternative Name:	TMED1 ( <a href="#">TMED1 Products</a> )
Background:	Full Gene Name: transmembrane emp24 protein transport domain containing 1 Synonyms: IL1RL1LG,IL1r11I,MGC1270,ST2L
Gene ID:	11018
NCBI Accession:	<a href="#">NM_006858</a>

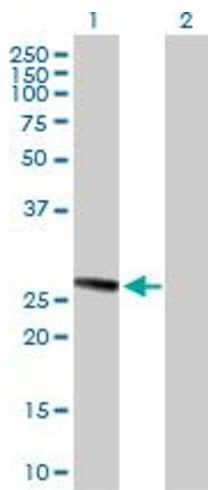
## Application Details

Application Notes:	Optimal working dilution should be determined by the investigator.
Restrictions:	For Research Use only

## Handling

Buffer:	In 1x PBS, pH 7.4
Handling Advice:	Aliquot to avoid repeated freezing and thawing.
Storage:	-20 °C
Storage Comment:	Store at -20°C or lower. Aliquot to avoid repeated freezing and thawing.

## Images



### Western Blotting

**Image 1.** Western Blot analysis of TMED1 expression in transfected 293T cell line by TMED1 MaxPab polyclonal antibody.

Lane 1: TMED1 transfected lysate(24.97 KDa).

Lane 2: Non-transfected lysate.