

Datasheet for ABIN524432  
**anti-PIM2 antibody (AA 1-311)**



[Go to Product page](#)

2 Images

Overview

Quantity:	100 µL
Target:	PIM2
Binding Specificity:	AA 1-311
Reactivity:	Human
Host:	Rabbit
Clonality:	Polyclonal
Conjugate:	This PIM2 antibody is un-conjugated
Application:	Western Blotting (WB), Immunoprecipitation (IP)

Product Details

Purpose:	Rabbit polyclonal antibody raised against a full-length human PIM2 protein.
Immunogen:	PIM2 (NP_006866.2, 1 a.a. ~ 311 a.a) full-length human protein.
Sequence:	MLTKPLQGPP APPGTPTPPP GPKDREAFA EYRLGPLLGK GFGTVFAGH RLTDRLQVAI KVIPRNRVLG WSPLSDSVTC PLEVALLWKV GAGGGHPGVI RLLDWFETQE GFMLVLERPL PAQDLFDYIT EKGPLGEGPS RCFGQVVAA IQHCHSRGVV HRDIKDENIL IDLRRGCAKL IDFGSGALLH DEPYTDFDGT RVYSPPEWIS RHQYHALPAT VWSLGLLYD MCVGDIPFER DQEILEAELH FPAHVSPDCC ALIRRCLAPK PSSRPSLEEI LLDPWMQTPA EDVPLNPSKG GPAPLAWSLP
Cross-Reactivity:	Human
Characteristics:	Antibody reactive against mammalian transfected lysate.

## Target Details

Target:	PIM2
Alternative Name:	PIM2 ( <a href="#">PIM2 Products</a> )
Background:	Full Gene Name: pim-2 oncogene Synonyms:
Gene ID:	11040
NCBI Accession:	<a href="#">NM_006875</a>

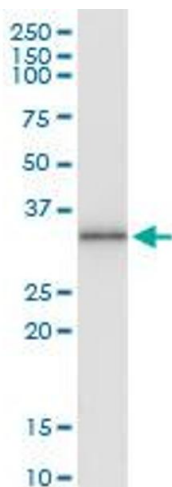
## Application Details

Application Notes:	Optimal working dilution should be determined by the investigator.
Restrictions:	For Research Use only

## Handling

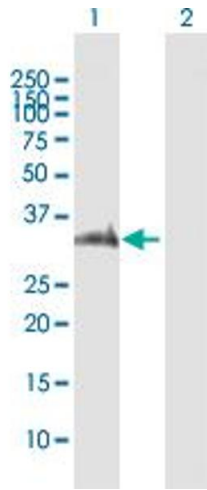
Format:	Liquid
Buffer:	No additive
Preservative:	Without preservative
Handling Advice:	Aliquot to avoid repeated freezing and thawing.
Storage:	-20 °C
Storage Comment:	Store at -20°C or lower. Aliquot to avoid repeated freezing and thawing.

## Images



### Immunoprecipitation

**Image 1.** Immunoprecipitation of PIM2 transfected lysate using anti-PIM2 MaxPab rabbit polyclonal antibody and Protein A Magnetic Bead , and immunoblotted with PIM2 purified MaxPab mouse polyclonal antibody (B01P) .



### Western Blotting

**Image 2.** Western Blot analysis of PIM2 expression in transfected 293T cell line by PIM2 MaxPab polyclonal antibody.

Lane 1: PIM2 transfected lysate(34.20 KDa).

Lane 2: Non-transfected lysate.