

Datasheet for ABIN524449
anti-WWP2 antibody (AA 1-335)



[Go to Product page](#)

1 Image

Overview

Quantity:	50 µg
Target:	WWP2
Binding Specificity:	AA 1-335
Reactivity:	Human
Host:	Mouse
Clonality:	Polyclonal
Conjugate:	This WWP2 antibody is un-conjugated
Application:	Western Blotting (WB)

Product Details

Purpose:	Mouse polyclonal antibody raised against a full-length human WWP2 protein.
Immunogen:	WWP2 (NP_955455.1, 1 a.a. ~ 335 a.a) full-length human protein.
Sequence:	MASASSSRAG VALPFEKSQL TLKVVSAPPK VHNRRPRINS YVEVAVDGLP SETKKTGKRI GSSELLWNEI IILNVTAQSH LDLKVWSCHT LRNELLGTAS VNLSNVLKNN GCKMENMQLT LNLQTENKGS VVSGGELTIF LDGPTVDLGN VPNGSALTDG SQLPSRDSSG TAVAPENRHQ PPSTNCFGGR SRTHRHSGAS ARTTPATGEQ SPGARSRHRQ PVKNSGHSGL ANGTVNDEPT TATDPEEPSV VGVTSPPAAP LSVTPNPNTT SLPAPATPAE GEEPSTSGTQ QLPAAAQAPD ALPAGWEQRE LPNGRVYYVD HNTKTTTWER PLPPG
Cross-Reactivity:	Human
Characteristics:	Antibody reactive against mammalian transfected lysate.

Target Details

Target:	WWP2
Alternative Name:	WWP2 (WWP2 Products)
Background:	Full Gene Name: WW domain containing E3 ubiquitin protein ligase 2 Synonyms: AIP2,WWp2-like
Gene ID:	11060
NCBI Accession:	NM_199423
Pathways:	Negative Regulation of Transporter Activity

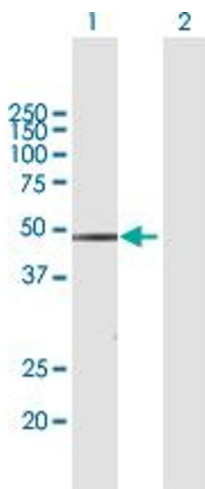
Application Details

Application Notes:	Optimal working dilution should be determined by the investigator.
Restrictions:	For Research Use only

Handling

Buffer:	In 1x PBS, pH 7.4
Handling Advice:	Aliquot to avoid repeated freezing and thawing.
Storage:	-20 °C
Storage Comment:	Store at -20°C or lower. Aliquot to avoid repeated freezing and thawing.

Images



Western Blotting

Image 1. Western Blot analysis of WWP2 expression in transfected 293T cell line by WWP2 MaxPab polyclonal antibody.

Lane 1: WWP2 transfected lysate(36.85 KDa).

Lane 2: Non-transfected lysate.