



[Go to Product page](#)

Datasheet for ABIN524460

anti-UBE2C antibody (AA 25-129)

2 Images

Overview

Quantity:	100 µg
Target:	UBE2C
Binding Specificity:	AA 25-129
Reactivity:	Human
Host:	Mouse
Clonality:	Monoclonal
Conjugate:	This UBE2C antibody is un-conjugated
Application:	Western Blotting (WB), ELISA

Product Details

Purpose:	Mouse monoclonal antibody raised against a partial recombinant UBE2C.
Immunogen:	UBE2C (AAH16292.1, 25 a.a. ~ 129 a.a) partial recombinant protein with GST tag. MW of the GST tag alone is 26 KDa.
Sequence:	GAARGPVGKR LQQELMTLMM SGDKGISAFP ESDNLFKWVG TIHGAAGTVY EDLRYKLSLE FPSGYPYNAP TVKFLTPCYH PNVDTQGNIC LDILKEKWSA LYDVR
Clone:	1D8
Isotype:	IgG2b
Cross-Reactivity:	Human
Characteristics:	Antibody Reactive Against Recombinant Protein.

Target Details

Target:	UBE2C
Alternative Name:	UBE2C (UBE2C Products)
Background:	Full Gene Name: ubiquitin-conjugating enzyme E2C Synonyms: UBCH10,dJ447F3.2
Gene ID:	11065
Pathways:	Ubiquitin Proteasome Pathway

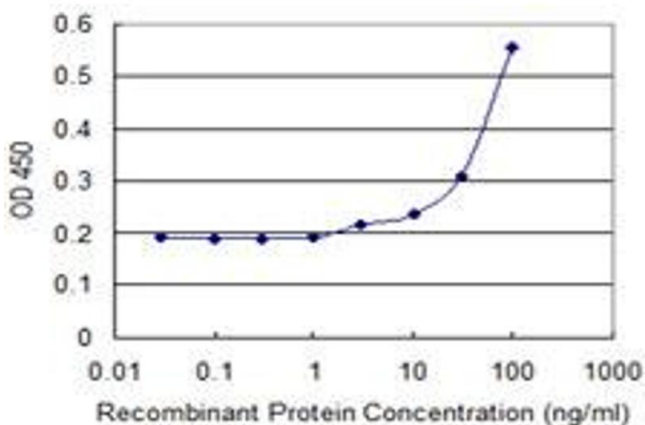
Application Details

Application Notes:	Optimal working dilution should be determined by the investigator.
Restrictions:	For Research Use only

Handling

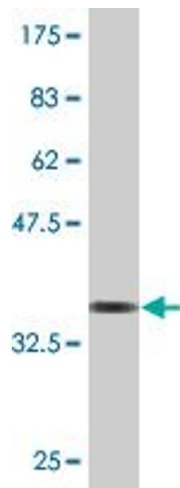
Buffer:	In 1x PBS, pH 7.4
Handling Advice:	Aliquot to avoid repeated freezing and thawing.
Storage:	-20 °C
Storage Comment:	Store at -20°C or lower. Aliquot to avoid repeated freezing and thawing.

Images



ELISA

Image 1. Detection limit for recombinant GST tagged UBE2C is 1 ng/ml as a capture antibody.



Western Blotting

Image 2. Western Blot detection against Immunogen (37.29 kDa).