



[Go to Product page](#)

Datasheet for ABIN524505
anti-WDR5 antibody (AA 16-120)

1 Image

Overview

Quantity:	100 µg
Target:	WDR5
Binding Specificity:	AA 16-120
Reactivity:	Human
Host:	Mouse
Clonality:	Monoclonal
Conjugate:	This WDR5 antibody is un-conjugated
Application:	ELISA

Product Details

Purpose:	Mouse monoclonal antibody raised against a partial recombinant WDR5.
Immunogen:	WDR5 (NP_060058, 16 a.a. ~ 120 a.a) partial recombinant protein with GST tag. MW of the GST tag alone is 26 KDa.
Sequence:	QPTPSSSATQ SKPTPVKPNY ALKFTLAGHT KAVSSVKFSP NGEWLASSSA DKLIKIWGAY DGKFECTISG HKLGISDVAW SSSDNLVSA SDDKTLKIWD VSSGK
Clone:	1B1
Isotype:	IgG2a
Cross-Reactivity:	Human
Characteristics:	Antibody Reactive Against Recombinant Protein.

Target Details

Target:	WDR5
Alternative Name:	WDR5 (WDR5 Products)
Background:	Full Gene Name: WD repeat domain 5 Synonyms: BIG-3,SWD3
Gene ID:	11091
NCBI Accession:	NM_017588

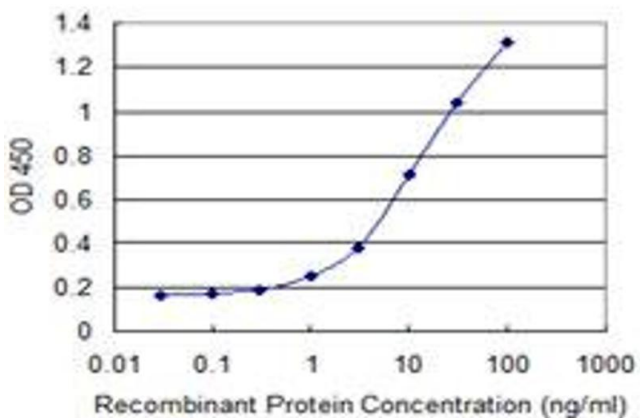
Application Details

Application Notes:	Optimal working dilution should be determined by the investigator.
Restrictions:	For Research Use only

Handling

Buffer:	In 1x PBS, pH 7.4
Handling Advice:	Aliquot to avoid repeated freezing and thawing.
Storage:	-20 °C
Storage Comment:	Store at -20°C or lower. Aliquot to avoid repeated freezing and thawing.

Images



ELISA

Image 1. Detection limit for recombinant GST tagged WDR5 is 0.3 ng/ml as a capture antibody.