



[Go to Product page](#)

Datasheet for ABIN524524
anti-FGFR10P antibody (AA 1-399)

2 Images

Overview

Quantity:	50 µg
Target:	FGFR10P
Binding Specificity:	AA 1-399
Reactivity:	Human
Host:	Mouse
Clonality:	Polyclonal
Conjugate:	This FGFR10P antibody is un-conjugated
Application:	Western Blotting (WB), Immunofluorescence (IF)

Product Details

Purpose:	Mouse polyclonal antibody raised against a full-length human FGFR10P protein.
Immunogen:	FGFR10P (NP_008976.1, 1 a.a. ~ 399 a.a) full-length human protein.
Sequence:	MAATAAAVVA EEDTELRLDLL VQTLNSGVL NRIKAELRAA VFLALEEQEK VENKTPLVNE SLKKFLNTKD GRLVASLVAE FLQFFNLDFT LAVFQPETST LQGLEGRENL ARDLGIIIEAE GTVGGPLLE VIRRCQQKEK GPTTGEGALD LSDVHSPPKS PEGKTSQAQTT PSKIPRYKGG GKKKTSGQKA GDKKANDEAN QSDTSVSLSE PKSKSSLHLL SHETKIGSFL SNRTLGDGKDK AGLCPDEDDM EGDSFFDDPI PKPEKTYGLR KEPRKQAGSL ASLSDAPPLK SGLSSLAGAP SLKDSSESKRG NTVLKDCLKLI SDKIGSLGLG TGEDDDYVDD FNSTSHRSEK SEISIGEEIE EDLSVEIDDI NTSDKLDDLT QDLTVSQLSD VADYLEDVA
Cross-Reactivity:	Human
Characteristics:	Antibody reactive against mammalian transfected lysate.

Target Details

Target:	FGFR10P
Alternative Name:	FGFR10P (FGFR10P Products)
Background:	Full Gene Name: FGFR1 oncogene partner Synonyms: FOP
Gene ID:	11116
NCBI Accession:	NM_007045
Pathways:	M Phase, Maintenance of Protein Location, SARS-CoV-2 Protein Interactome

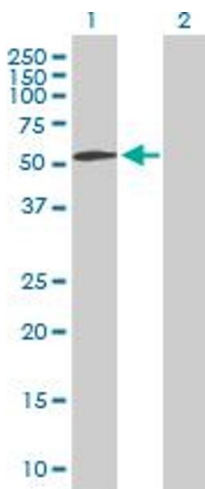
Application Details

Application Notes:	Optimal working dilution should be determined by the investigator.
Restrictions:	For Research Use only

Handling

Buffer:	In 1x PBS, pH 7.4
Handling Advice:	Aliquot to avoid repeated freezing and thawing.
Storage:	-20 °C
Storage Comment:	Store at -20°C or lower. Aliquot to avoid repeated freezing and thawing.

Images

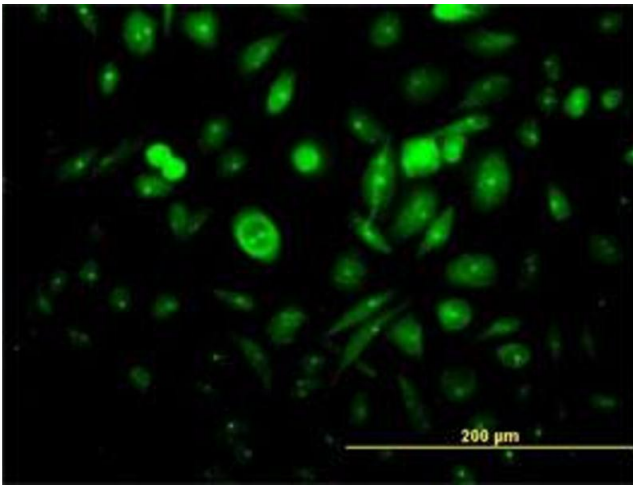


Western Blotting

Image 1. Western Blot analysis of FGFR10P expression in transfected 293T cell line by FGFR10P MaxPab polyclonal antibody.

Lane 1: FGFR10P transfected lysate(43.89 KDa).

Lane 2: Non-transfected lysate.



Immunofluorescence

Image 2. Immunofluorescence of purified MaxPab antibody to FGFR10P on HeLa cell. (antibody concentration 10 μg/mL)