

Datasheet for ABIN524555
anti-PWP1 antibody (AA 1-501)



[Go to Product page](#)

3 Images

Overview

Quantity:	100 µg
Target:	PWP1
Binding Specificity:	AA 1-501
Reactivity:	Human
Host:	Mouse
Clonality:	Monoclonal
Conjugate:	This PWP1 antibody is un-conjugated
Application:	Western Blotting (WB), ELISA

Product Details

Purpose:	Mouse monoclonal antibody raised against a full-length recombinant PWP1.
Immunogen:	PWP1 (AAH01652, 1 a.a. ~ 501 a.a) full-length recombinant protein with GST tag. MW of the GST tag alone is 26 KDa.
Sequence:	MNRSRQVTCV AAVRCGVAKE TPDKVELSKE EVKRLIAEAK EKLQEEGGGS DEEETGSPSE DGMQSARTQA RPREPLEDGD PEDDRTLDDD ELAEYDLDKY DEEGDPDAET LGESLLGLTV YGSNDQDPYV TLKDTEQYER EDFLIKPSDN LIVCGRAEQD QCNLDVHVYN QEEDSFYVHH DILLSAYPLS VEWLNFDPSD DDSTGNVIAV GNMTVPVIEVW DLDIVDSLEP VFTLGSKLSK KKKKKGGKSS SAEGHTDAVL DLSWNKLIRN VLASASADNT VILWDMSLGK PAASLAVHTD KVQTLQFHPF EAQTLISGSY DKSVALYDCR SPDESHRMWR FSGQIERVTW NHFSPCHFLA STDDGFVYNL DARSDKPIFT LNAHNDEISG LDLSSQIKGC LVTASADKYV KIWDILGDRP SLVHSRDMKM GVLFCSSCCP DLPIYALRG QKEGLRVWDI STVSSVNEAF GRRERLVLGS ARNSSISGPF GSRSSDTPME S

Product Details

Clone:	1A12
Isotype:	IgG1
Cross-Reactivity:	Human
Characteristics:	Antibody Reactive Against Recombinant Protein.

Target Details

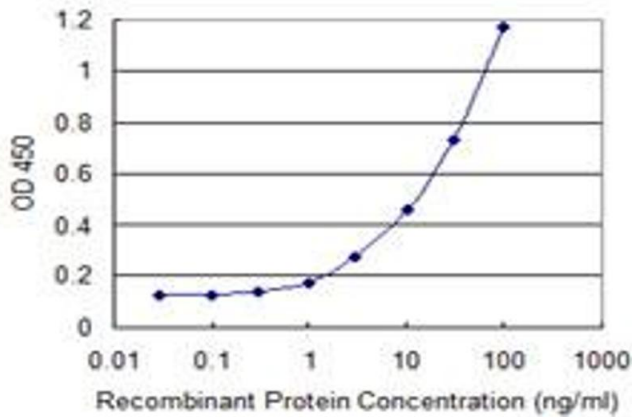
Target:	PWP1
Alternative Name:	PWP1 (PWP1 Products)
Background:	Full Gene Name: PWP1 homolog (S. cerevisiae) Synonyms: IEF-SSP-9502
Gene ID:	11137

Application Details

Application Notes:	Optimal working dilution should be determined by the investigator.
Restrictions:	For Research Use only

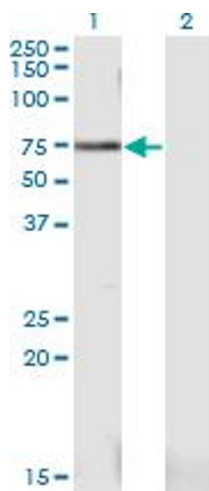
Handling

Buffer:	In 1x PBS, pH 7.4
Handling Advice:	Aliquot to avoid repeated freezing and thawing.
Storage:	-20 °C
Storage Comment:	Store at -20°C or lower. Aliquot to avoid repeated freezing and thawing.



ELISA

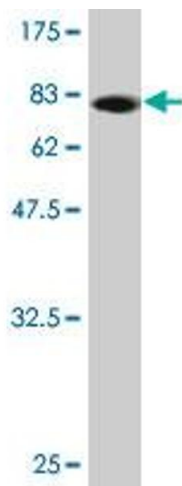
Image 1. Detection limit for recombinant GST tagged PWP1 is 0.3 ng/ml as a capture antibody.



Western Blotting

Image 2. Western Blot analysis of PWP1 expression in transfected 293T cell line by PWP1 monoclonal antibody (M03), clone 1A12.

Lane 1: PWP1 transfected lysate (Predicted MW: 55.9 KDa).
Lane 2: Non-transfected lysate.



Western Blotting

Image 3. Western Blot detection against Immunogen (80.85 KDa).