



[Go to Product page](#)

Datasheet for ABIN524557

## anti-IL1RAPL1 antibody (AA 151-250)

### 1 Image

#### Overview

Quantity:	50 µL
Target:	IL1RAPL1
Binding Specificity:	AA 151-250
Reactivity:	Human
Host:	Mouse
Clonality:	Polyclonal
Conjugate:	This IL1RAPL1 antibody is un-conjugated
Application:	Western Blotting (WB), ELISA

#### Product Details

Purpose:	Mouse polyclonal antibody raised against a partial recombinant IL1RAPL1.
Immunogen:	IL1RAPL1 (NP_055086.1, 151 a.a. ~ 250 a.a) partial recombinant protein with GST tag.
Sequence:	FEKAELSKSK EISCRDIEDF LLPTREPEIL WYKECRTKTW RPSIVFKRDT LLIREVREDD IGNYTCELKY GGFVVRTTE LTVTAPLTDK PPKLLYPMES
Cross-Reactivity:	Human
Characteristics:	Antibody Reactive Against Recombinant Protein.

#### Target Details

Target:	IL1RAPL1
Alternative Name:	IL1RAPL1 ( <a href="#">IL1RAPL1 Products</a> )

## Target Details

Background:	Full Gene Name: interleukin 1 receptor accessory protein-like 1 Synonyms: IL1R8,IL1RAPL,MRX10,MRX21,MRX34,OPHN4,TIGIRR-2
Gene ID:	11141
NCBI Accession:	<a href="#">NM_014271</a>
Pathways:	<a href="#">Synaptic Membrane</a> , <a href="#">Growth Factor Binding</a>

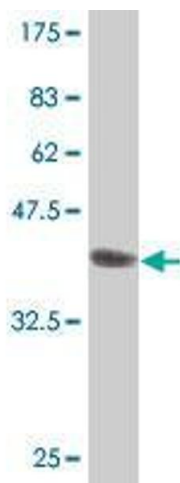
## Application Details

Application Notes:	Optimal working dilution should be determined by the investigator.
Restrictions:	For Research Use only

## Handling

Format:	Liquid
Buffer:	50 % glycerol
Handling Advice:	Aliquot to avoid repeated freezing and thawing.
Storage:	-20 °C
Storage Comment:	Store at -20°C or lower. Aliquot to avoid repeated freezing and thawing.

## Images



### Western Blotting

**Image 1.** Western Blot detection against Immunogen (37.11 kDa).