



[Go to Product page](#)

Datasheet for ABIN524565
anti-PLA2G16 antibody (AA 1-162)

3 Images

Overview

Quantity:	50 µg
Target:	PLA2G16
Binding Specificity:	AA 1-162
Reactivity:	Human
Host:	Mouse
Clonality:	Polyclonal
Conjugate:	This PLA2G16 antibody is un-conjugated
Application:	Western Blotting (WB), Immunofluorescence (IF)

Product Details

Purpose:	Mouse polyclonal antibody raised against a full-length human HRASLS3 protein.
Immunogen:	HRASLS3 (AAH01387.1, 1 a.a. ~ 162 a.a) full-length human protein.
Sequence:	MRAPIPEPKP GDLIEIFRPF YRHWAIYVGD GYVVHLAPPS EVAGAGAASV MSALTDKAIV KKELLYDVAG SDKYQVNNKH DDKYSPLPCS KIIQRAEELV GQEVLYKLTS ENCEHFVNEL RYGVARSQV RDVIAASVA GMGLAAMSLI GVMFSRNKRQ KQ
Cross-Reactivity:	Human
Characteristics:	Antibody reactive against mammalian transfected lysate.

Target Details

Target:	PLA2G16
---------	---------

Target Details

Alternative Name:	PLA2G16 (PLA2G16 Products)
Background:	Full Gene Name: phospholipase A2, group XVI Synonyms: AdPLA,H-REV107-1,HRASLS3,HREV107,HREV107-3,MGC118754
Gene ID:	11145
Pathways:	Inositol Metabolic Process

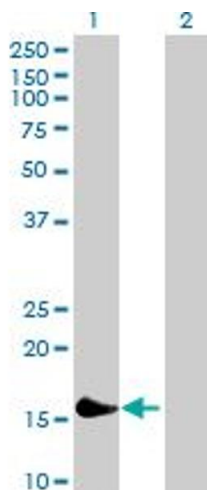
Application Details

Application Notes:	Optimal working dilution should be determined by the investigator.
Restrictions:	For Research Use only

Handling

Buffer:	In 1x PBS, pH 7.4
Handling Advice:	Aliquot to avoid repeated freezing and thawing.
Storage:	-20 °C
Storage Comment:	Store at -20°C or lower. Aliquot to avoid repeated freezing and thawing.

Images

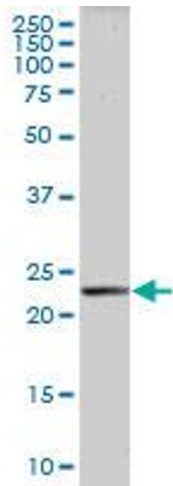


Western Blotting

Image 1. Western Blot analysis of PLA2G16 expression in transfected 293T cell line by PLA2G16 MaxPab polyclonal antibody.

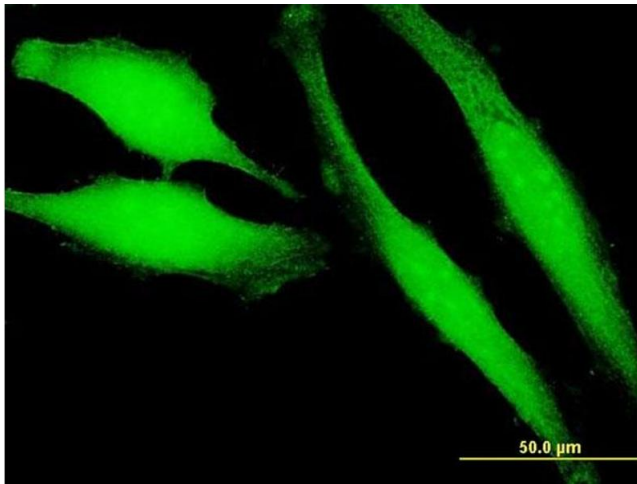
Lane 1: HRASLS3 transfected lysate(17.82 KDa).

Lane 2: Non-transfected lysate.



Western Blotting

Image 2. HRASLS3 MaxPab polyclonal antibody. Western Blot analysis of HRASLS3 expression in human placenta.



Immunofluorescence

Image 3. Immunofluorescence of purified MaxPab antibody to HRASLS3 on HeLa cell. [antibody concentration 10 ug/ml]