



[Go to Product page](#)

Datasheet for ABIN524568
anti-PLA2G16 antibody (AA 1-162)

3 Images

Overview

Quantity:	100 µg
Target:	PLA2G16
Binding Specificity:	AA 1-162
Reactivity:	Human
Host:	Mouse
Clonality:	Monoclonal
Conjugate:	This PLA2G16 antibody is un-conjugated
Application:	ELISA, Western Blotting (WB)

Product Details

Purpose:	Mouse monoclonal antibody raised against a full-length recombinant PLA2G16.
Immunogen:	PLA2G16 (AAH01387, 1 a.a. ~ 162 a.a) full-length recombinant protein with GST tag. MW of the GST tag alone is 26 KDa.
Sequence:	MRAPIPEPKP GDLIEIFRPF YRHWAIVYVD GYVHLAPPS EVAGAGAASV MSALTDKAIV KKELLYDVAG SDKYQVNNKH DDKYSPLPCS KIIQRAEELV GQEVLYKLTS ENCEHFVNEL RYGVARSDQV RDVIIAASVA GMGLAAMSLI GVMFSRNKRQ KQ
Clone:	4C4-2A11
Isotype:	IgG1
Cross-Reactivity:	Human
Characteristics:	Antibody Reactive Against Recombinant Protein.

Target Details

Target:	PLA2G16
Alternative Name:	PLA2G16 (PLA2G16 Products)
Background:	Full Gene Name: phospholipase A2, group XVI Synonyms: AdPLA,H-REV107-1,HRASLS3,HREV107,HREV107-3,MGC118754
Gene ID:	11145
Pathways:	Inositol Metabolic Process

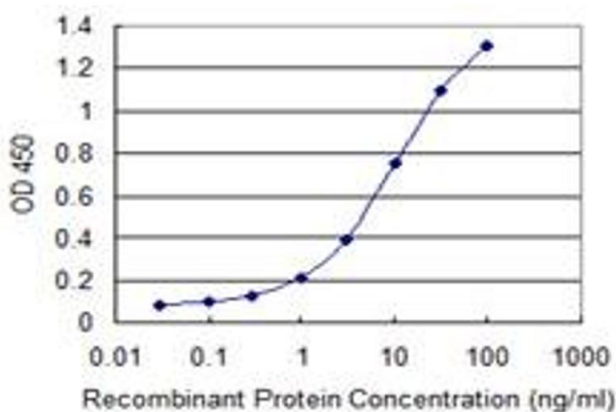
Application Details

Application Notes:	Optimal working dilution should be determined by the investigator.
Restrictions:	For Research Use only

Handling

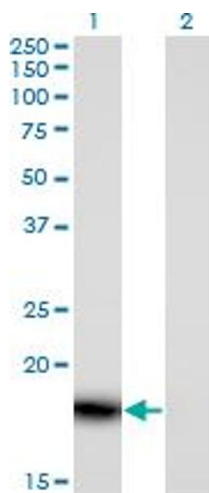
Buffer:	In 1x PBS, pH 7.4
Handling Advice:	Aliquot to avoid repeated freezing and thawing.
Storage:	-20 °C
Storage Comment:	Store at -20°C or lower. Aliquot to avoid repeated freezing and thawing.

Images



ELISA

Image 1. Detection limit for recombinant GST tagged PLA2G16 is 0.1 ng/ml as a capture antibody.

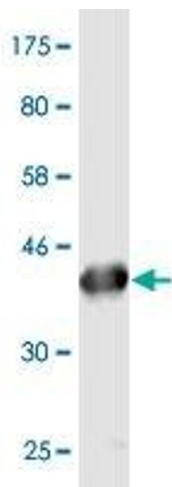


Western Blotting

Image 2. Western Blot analysis of PLA2G16 expression in transfected 293T cell line by PLA2G16 monoclonal antibody (M02), clone 4C4-2A11.

Lane 1: PLA2G16 transfected lysate (Predicted MW: 17.9 kDa).

Lane 2: Non-transfected lysate.



Western Blotting

Image 3. Western Blot detection against Immunogen (43.56 kDa).