



[Go to Product page](#)

Datasheet for ABIN524620

anti-SUPT16H antibody (AA 608-715)

1 Image

Overview

Quantity:	100 µg
Target:	SUPT16H
Binding Specificity:	AA 608-715
Reactivity:	Human
Host:	Mouse
Clonality:	Monoclonal
Conjugate:	This SUPT16H antibody is un-conjugated
Application:	ELISA

Product Details

Purpose:	Mouse monoclonal antibody raised against a partial recombinant SUPT16H.
Immunogen:	SUPT16H (NP_009123, 608 a.a. ~ 715 a.a) partial recombinant protein with GST tag. MW of the GST tag alone is 26 KDa.
Sequence:	PGEQTVPALN LQNAFRIIKE VQKRYKTREA EEKEKEGIVK QDSLVINLNR SNPCLKDLYI RPNIAQKRMQ GSLEAHVNGF RFTSVRGDKV DILYNNIKHA LFQPCDGE
Clone:	1F1
Isotype:	IgG2b
Cross-Reactivity:	Human
Characteristics:	Antibody Reactive Against Recombinant Protein.

Target Details

Target:	SUPT16H
Alternative Name:	SUPT16H (SUPT16H Products)
Background:	Full Gene Name: suppressor of Ty 16 homolog (S. cerevisiae) Synonyms: CDC68,FACT,FACTP140,FLJ10857,FLJ14010,FLJ34357,SPT16/CDC68
Gene ID:	11198
NCBI Accession:	NM_007192
Pathways:	Chromatin Binding

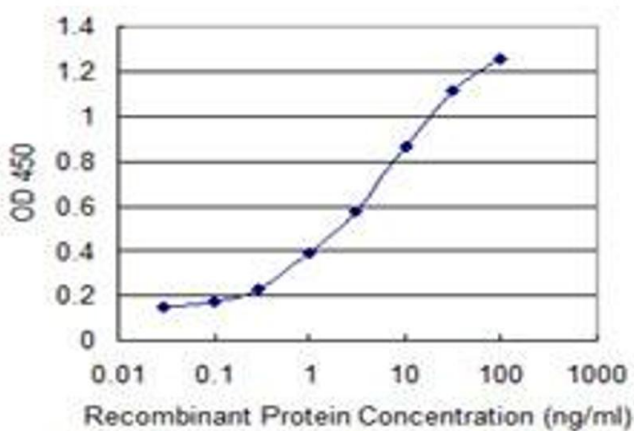
Application Details

Application Notes:	Optimal working dilution should be determined by the investigator.
Restrictions:	For Research Use only

Handling

Buffer:	In 1x PBS, pH 7.4
Handling Advice:	Aliquot to avoid repeated freezing and thawing.
Storage:	-20 °C
Storage Comment:	Store at -20°C or lower. Aliquot to avoid repeated freezing and thawing.

Images



ELISA

Image 1. Detection limit for recombinant GST tagged SUPT16H is 0.03 ng/ml as a capture antibody.