



[Go to Product page](#)

Datasheet for ABIN524630
anti-CHEK2 antibody (AA 1-543)

4 Images

Overview

Quantity:	50 µg
Target:	CHEK2
Binding Specificity:	AA 1-543
Reactivity:	Human
Host:	Mouse
Clonality:	Polyclonal
Conjugate:	This CHEK2 antibody is un-conjugated
Application:	Western Blotting (WB), Immunofluorescence (IF)

Product Details

Purpose:	Mouse polyclonal antibody raised against a full-length human CHEK2 protein.
Immunogen:	CHEK2 (NP_009125.1, 1 a.a. ~ 543 a.a) full-length human protein.
Sequence:	MSRES DVEAQ QSHGSSACSQ PHGSVTQSQG SSSQSQGISS SSTSTMPNSS QSSHSSSGTL SSLETVSTQE LYSIPEDQEP EDQEPEEPTP APWARLWALQ DGFANLECVN DNYWFGDRDKS CEYCFDEPLL KRTDKYRTYS KKHFRIFREV GPKNSYIAYI EDHSGNGTFV NTELVGKGR RPLNNNSEIA LSLSRNKVFV FFDLTVDDQS VYPKALRDEY IMSKTLGSGA CGEVKLA FER KTCKKVAIKI ISKRKFAIGS AREADPALNV ETEIEILKKL NHPCI IKIN FFDAEDYYIV LELMEGGELF DKVVGNKRLK EATCKLYFYQ MLLAVQYLHE NGIIHRDLKP ENVLLSSQEE DCLIKITDFG HSKILGETSL MRTLCGTPTY LAPELVSVG TAGYNRAVDC WSLGVILFIC LSGYPPFSEH RTQVSLKDQI TSGKYNFIPE VVAEVSEKAL DLVKLLVVD PKARFTTEEA LRHPWLQDED MKRKFQDLLS EENESTALPQ VLAQPSTSRK RPREGEAEGA ETTKRPVCA AVL

Product Details

Cross-Reactivity:	Human
Characteristics:	Antibody reactive against mammalian transfected lysate.

Target Details

Target:	CHEK2
Alternative Name:	CHEK2 (CHEK2 Products)
Background:	Full Gene Name: CHK2 checkpoint homolog (S. pombe) Synonyms: CDS1,CHK2,HuCds1,LFS2,PP1425,RAD53
Gene ID:	11200
NCBI Accession:	NM_007194
Pathways:	p53 Signaling , Apoptosis , Cell Division Cycle

Application Details

Application Notes:	Optimal working dilution should be determined by the investigator.
Restrictions:	For Research Use only

Handling

Buffer:	In 1x PBS, pH 7.4
Handling Advice:	Aliquot to avoid repeated freezing and thawing.
Storage:	-20 °C
Storage Comment:	Store at -20°C or lower. Aliquot to avoid repeated freezing and thawing.

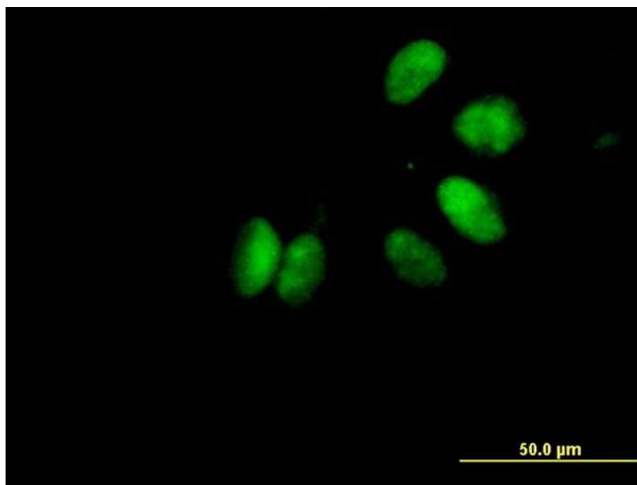


Western Blotting

Image 1. Western Blot analysis of CHEK2 expression in transfected 293T cell line by CHEK2 MaxPab polyclonal antibody.

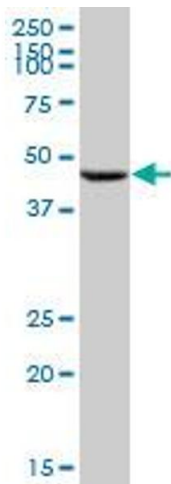
Lane 1: CHEK2 transfected lysate(59.73 KDa).

Lane 2: Non-transfected lysate.



Immunofluorescence

Image 2. Immunofluorescence of purified MaxPab antibody to CHEK2 on HeLa cell. [antibody concentration 10 ug/ml]



Western Blotting

Image 3. CHEK2 MaxPab polyclonal antibody. Western Blot analysis of CHEK2 expression in human liver.

Please check the [product details page](#) for more images. Overall 4 images are available for ABIN524630.