



[Go to Product page](#)

Datasheet for ABIN524635  
**anti-Kallikrein 8 antibody (AA 1-260)**

1 Image

Overview

Quantity:	50 µg
Target:	Kallikrein 8 (KLK8)
Binding Specificity:	AA 1-260
Reactivity:	Human
Host:	Mouse
Clonality:	Polyclonal
Conjugate:	This Kallikrein 8 antibody is un-conjugated
Application:	Western Blotting (WB)

Product Details

Purpose:	Mouse polyclonal antibody raised against a full-length human KLK8 protein.
Immunogen:	KLK8 (NP_009127.1, 1 a.a. ~ 260 a.a) full-length human protein.
Sequence:	MGRPRPRAAK TWMFLLLLGG AWAGHSRAQE DKVLGGHECQ PHSQPWQAAL FQGQQLLCGG VLVGGNWWLT AAHCKKPKYT VRLGDHSLQN KDGPEQEIPV VQSIPHPCYN SSDVEDHNHD LMLLQLRDQA SLGSKVKPIS LADHCTQPGQ KCTVSGWGTV TSPRENF PDT LNCAEVKIFP QKKCEDAYPG QITDGMVCAG SSKGADTCQG DSGGPLVCDG ALQGITSWGS DPCGRSDKPG VYTNICRYLD WIKKIIGSKG
Cross-Reactivity:	Human
Characteristics:	Antibody reactive against mammalian transfected lysate.

## Target Details

Target:	Kallikrein 8 (KLK8)
Alternative Name:	KLK8 ( <a href="#">KLK8 Products</a> )
Background:	Full Gene Name: kallikrein-related peptidase 8 Synonyms: HNP,NP,NRPN,PRSS19,TADG14
Gene ID:	11202
NCBI Accession:	<a href="#">NM_007196</a>
Pathways:	<a href="#">Complement System</a>

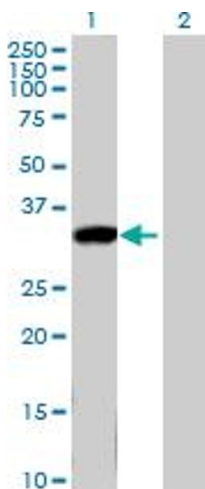
## Application Details

Application Notes:	Optimal working dilution should be determined by the investigator.
Restrictions:	For Research Use only

## Handling

Buffer:	In 1x PBS, pH 7.4
Handling Advice:	Aliquot to avoid repeated freezing and thawing.
Storage:	-20 °C
Storage Comment:	Store at -20°C or lower. Aliquot to avoid repeated freezing and thawing.

## Images



### Western Blotting

**Image 1.** Western Blot analysis of KLK8 expression in transfected 293T cell line by KLK8 MaxPab polyclonal antibody.

Lane 1: KLK8 transfected lysate(28.6 KDa).

Lane 2: Non-transfected lysate.