

Datasheet for ABIN524684
anti-CHP antibody (AA 1-66)[Go to Product page](#)

1 Image

Overview

Quantity:	200 µL
Target:	CHP
Binding Specificity:	AA 1-66
Reactivity:	Human
Host:	Mouse
Clonality:	Monoclonal
Conjugate:	This CHP antibody is un-conjugated
Application:	Western Blotting (WB), ELISA

Product Details

Purpose:	Mouse monoclonal antibody raised against a full-length recombinant CHP.
Immunogen:	CHP (AAH08373, 1 a.a. ~ 66 a.a) full-length recombinant protein with GST tag. MW of the GST tag alone is 26 KDa.
Sequence:	MESHSVTQAG VQWRDLGSLQ PLPPGFKQFS HLSLPSSWDY RRVPPYLGNF CIFS GEGVSP CWPGWS
Clone:	3G8
Isotype:	IgG2a kappa
Cross-Reactivity:	Human

Target Details

Target:	CHP
Alternative Name:	CHP (CHP Products)
Background:	Full Gene Name: calcium binding protein P22 Synonyms: SLC9A1BP
Gene ID:	11261
Pathways:	Proton Transport , Regulation of Carbohydrate Metabolic Process , VEGF Signaling

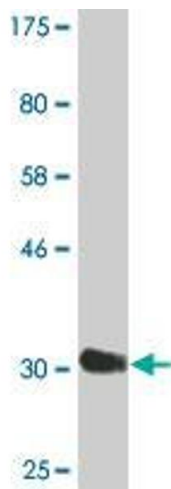
Application Details

Application Notes:	Optimal working dilution should be determined by the investigator.
Comment:	Product Quality tested by: Antibody Reactive Against Recombinant Protein.
Restrictions:	For Research Use only

Handling

Format:	Liquid
Buffer:	In ascites fluid
Handling Advice:	Aliquot to avoid repeated freezing and thawing.
Storage:	-20 °C
Storage Comment:	Store at -20°C or lower. Aliquot to avoid repeated freezing and thawing.

Images



Western Blotting

Image 1. Western Blot detection against Immunogen (33 KDa) .