

Datasheet for ABIN524687  
**anti-SP140 antibody (AA 504-612)**



[Go to Product page](#)

3 Images

## Overview

Quantity:	100 µg
Target:	SP140
Binding Specificity:	AA 504-612
Reactivity:	Human
Host:	Mouse
Clonality:	Monoclonal
Conjugate:	This SP140 antibody is un-conjugated
Application:	ELISA, Immunofluorescence (IF), Immunohistochemistry (Paraffin-embedded Sections) (IHC (p))

## Product Details

Purpose:	Mouse monoclonal antibody raised against a partial recombinant SP140.
Immunogen:	SP140 (NP_009168.3, 504 a.a. ~ 612 a.a) partial recombinant protein with GST tag. MW of the GST tag alone is 26 KDa.
Sequence:	GHGWSRMRMR RQKNSQQNDN SKADGQVVSS EKKANVNLKD LSKIRGRKRG KPGTRFTQSD RAAQKRVRSR ASRKHKDETV DFKAPLLPVT CGGVKGILHK KKLQQGILV
Clone:	3F9
Isotype:	IgG2a
Cross-Reactivity:	Human
Characteristics:	Antibody Reactive Against Recombinant Protein.

## Target Details

Target:	SP140
Alternative Name:	SP140 ( <a href="#">SP140 Products</a> )
Background:	Full Gene Name: SP140 nuclear body protein Synonyms: LYSP100,LYSP100-A,LYSP100-B,MGC126440
Gene ID:	11262
NCBI Accession:	<a href="#">NM_007237</a>

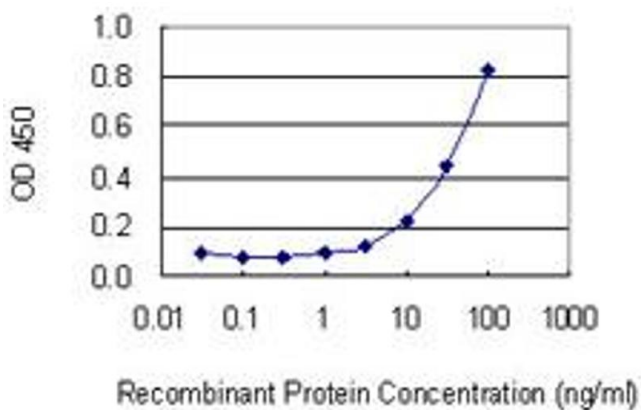
## Application Details

Application Notes:	Optimal working dilution should be determined by the investigator.
Restrictions:	For Research Use only

## Handling

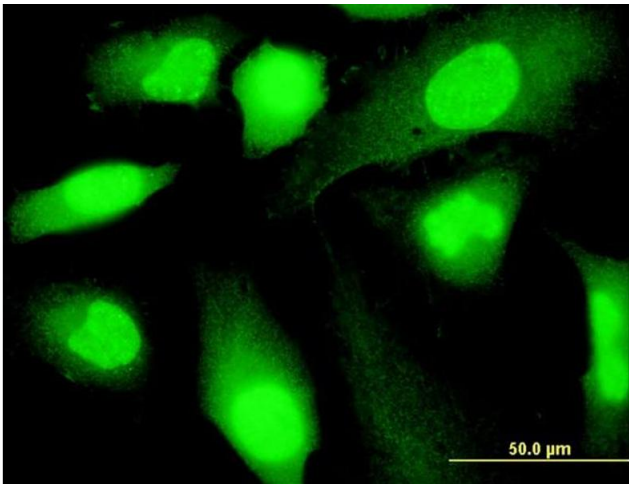
Buffer:	In 1x PBS, pH 7.4
Handling Advice:	Aliquot to avoid repeated freezing and thawing.
Storage:	-20 °C
Storage Comment:	Store at -20°C or lower. Aliquot to avoid repeated freezing and thawing.

## Images



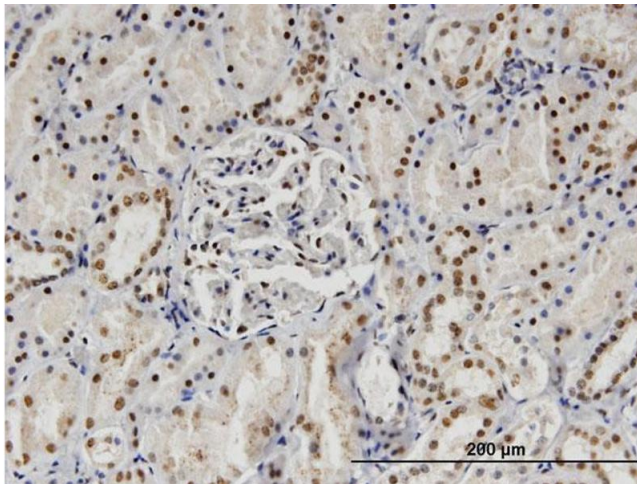
### ELISA

**Image 1.** Detection limit for recombinant GST tagged SP140 is 0.3 ng/ml as a capture antibody.



### Immunofluorescence

**Image 2.** Immunofluorescence of monoclonal antibody to SP140 on HeLa cell. [antibody concentration 10 ug/ml]



### Immunostaining

**Image 3.** Immunoperoxidase of monoclonal antibody to SP140 on formalin-fixed paraffin-embedded human kidney. [antibody concentration 1.5 ug/ml]