

Datasheet for ABIN524688
anti-DUSP12 antibody (AA 1-340)



[Go to Product page](#)

2 Images

Overview

| | |
|----------------------|---------------------------------------|
| Quantity: | 50 µg |
| Target: | DUSP12 |
| Binding Specificity: | AA 1-340 |
| Reactivity: | Human |
| Host: | Mouse |
| Clonality: | Polyclonal |
| Conjugate: | This DUSP12 antibody is un-conjugated |
| Application: | Western Blotting (WB) |

Product Details

| | |
|-------------------|--|
| Purpose: | Mouse polyclonal antibody raised against a full-length human DUSP12 protein. |
| Immunogen: | DUSP12 (NP_009171.1, 1 a.a. ~ 340 a.a) full-length human protein. |
| Sequence: | MLEAPGPSDG CELSNPSASR VSCAGQMLEV QPGLYFGGAA AVAEPDHLRE AGITAVLTVD SEEPSFKAGP GVEDLWRLFV PALDKPETDL LSHLDRCVAF IGQARAEGRA VLVHCHAGVS RSVAIITAFI MKTDQLPF EK AY EKLQILKP EAKMNEGF EW QLKLYQAMGY EVDTSSAIYK QYRLQKVTEK YPELQNL PQE LFAVDPTTVS QGLKDEVLYK CRKCRRSLFR SSSILDHREG SGPIAFAH KR MTPSSMLTTG RQAQCTSYFI EPVQWMESAL LGVMDGQLLC PKCSAKLG SF N WYGEQCSCG RWITPAFQIH KNRVDEM KIL PVLGSQTGKI |
| Cross-Reactivity: | Human |
| Characteristics: | Antibody reactive against mammalian transfected lysate. |

Target Details

| | |
|-------------------|---|
| Target: | DUSP12 |
| Alternative Name: | DUSP12 (DUSP12 Products) |
| Background: | Full Gene Name: dual specificity phosphatase 12 Synonyms: DUSP1,YVH1 |
| Gene ID: | 11266 |
| NCBI Accession: | NM_007240 |
| Pathways: | Regulation of Carbohydrate Metabolic Process |

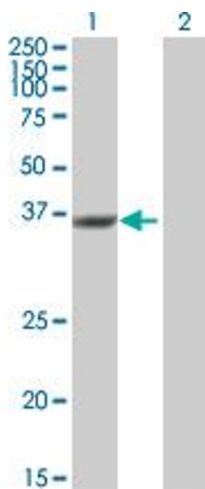
Application Details

| | |
|--------------------|--|
| Application Notes: | Optimal working dilution should be determined by the investigator. |
| Restrictions: | For Research Use only |

Handling

| | |
|------------------|--|
| Buffer: | In 1x PBS, pH 7.4 |
| Handling Advice: | Aliquot to avoid repeated freezing and thawing. |
| Storage: | -20 °C |
| Storage Comment: | Store at -20°C or lower. Aliquot to avoid repeated freezing and thawing. |

Images

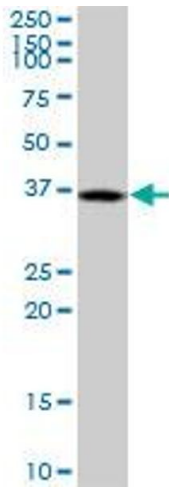


Western Blotting

Image 1. Western Blot analysis of DUSP12 expression in transfected 293T cell line by DUSP12 MaxPab polyclonal antibody.

Lane 1: DUSP12 transfected lysate(37.4 KDa).

Lane 2: Non-transfected lysate.



Western Blotting

Image 2. DUSP12 MaxPab polyclonal antibody. Western Blot analysis of DUSP12 expression in HeLa S3 NE.