

Datasheet for ABIN524689  
**anti-DUSP12 antibody (AA 1-340)**



[Go to Product page](#)

3 Images

## Overview

Quantity:	100 µL
Target:	DUSP12
Binding Specificity:	AA 1-340
Reactivity:	Human
Host:	Rabbit
Clonality:	Polyclonal
Conjugate:	This DUSP12 antibody is un-conjugated
Application:	Western Blotting (WB), Immunoprecipitation (IP), Immunofluorescence (IF)

## Product Details

Purpose:	Rabbit polyclonal antibody raised against a full-length human DUSP12 protein.
Immunogen:	DUSP12 (NP_009171.1, 1 a.a. ~ 340 a.a) full-length human protein.
Sequence:	MLEAPGPSDG CELSNPSASR VSCAGQMLEV QPGLYFGGAA AVAEPDHLRE AGITAVLTVD SEEPSFKAGP GVEDLWRLFV PALDKPETDL LSHLDRCVAF IGQARAEGRA VLVHCHAGVS RSVAIITAFI MKTDQLPF EK AY EKLQILKP EAKMNEGF EW QLKLYQAMGY EVDTSSAIYK QYRLQKVTEK YPELQNL PQE LFAVDPTTVS QGLKDEVLYK CRKCRRSLFR SSSILDHREG SGPIAFAH KR MTPSSMLTTG RQAQCTSYFI EPVQWMESAL LGVMDGQLLC PKCSAKLG SF N WYGEQCSCG RWITPAFQIH KNRVDEM KIL PVLGSQTGKI
Cross-Reactivity:	Human
Characteristics:	Antibody reactive against mammalian transfected lysate.

## Target Details

Target:	DUSP12
Alternative Name:	DUSP12 ( <a href="#">DUSP12 Products</a> )
Background:	Full Gene Name: dual specificity phosphatase 12 Synonyms: DUSP1,YVH1
Gene ID:	11266
NCBI Accession:	<a href="#">NM_007240</a>
Pathways:	<a href="#">Regulation of Carbohydrate Metabolic Process</a>

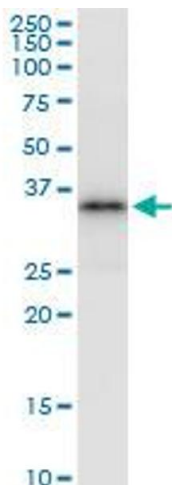
## Application Details

Application Notes:	Optimal working dilution should be determined by the investigator.
Restrictions:	For Research Use only

## Handling

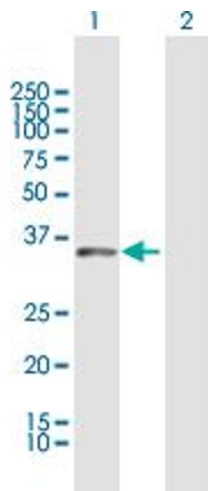
Format:	Liquid
Buffer:	No additive
Preservative:	Without preservative
Handling Advice:	Aliquot to avoid repeated freezing and thawing.
Storage:	-20 °C
Storage Comment:	Store at -20°C or lower. Aliquot to avoid repeated freezing and thawing.

## Images



### Immunoprecipitation

**Image 1.** Immunoprecipitation of DUSP12 transfected lysate using anti-DUSP12 MaxPab rabbit polyclonal antibody and Protein A Magnetic Bead, and immunoblotted with DUSP12 purified MaxPab mouse polyclonal antibody (B01P).

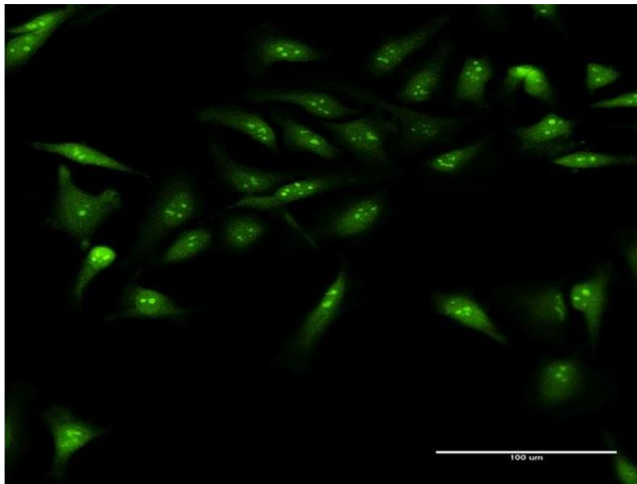


### Western Blotting

**Image 2.** Western Blot analysis of DUSP12 expression in transfected 293T cell line by DUSP12 MaxPab polyclonal antibody.

Lane 1: DUSP12 transfected lysate(37.7 kDa).

Lane 2: Non-transfected lysate.



### Immunofluorescence

**Image 3.** Immunofluorescence of purified MaxPab antibody to DUSP12 on HeLa cell. [antibody concentration 20 ug/ml]