



[Go to Product page](#)

Datasheet for ABIN524708

## anti-KLF8 antibody (AA 1-359)

2 Images

1 Publication

### Overview

Quantity:	50 µg
Target:	KLF8
Binding Specificity:	AA 1-359
Reactivity:	Human
Host:	Mouse
Clonality:	Polyclonal
Conjugate:	This KLF8 antibody is un-conjugated
Application:	Western Blotting (WB), Immunofluorescence (IF)

### Product Details

Purpose:	Mouse polyclonal antibody raised against a full-length human KLF8 protein.
Immunogen:	KLF8 (NP_009181.2, 1 a.a. ~ 359 a.a) full-length human protein.
Sequence:	MVDMDKLINN LEVQLNSEGG SMQVFKQVTA SVRNRDPPEI EYRSNMTSPT LLDANPMENP ALFNDIKIEP PEELLASDFS LPQVEPVDLS FHKPKAPLQP ASMLQAPIRP PKPQSSPQTL VVSTSTSDMS TSANIPTVLT PGSVLTSSQS TGSQQILHVI HTIPSVSLPN KMGGLKTIPV VVQSLPMVYT TLPADGGPAA ITVPLIGGDG KNAGSVKVDP TSMSPLEIPS DSEESTIESG SSALQSLQGL QQEPAAMAQM QGEESLDLKR RRIHQCDFAG CSKVYTKSSH LKAHRRRIHTG EKPYKCTWDG CSWKFARSDE LTRHFRKHTG IKPFRCTDCN RSFSRSDHLS LHRRRHDTM
Cross-Reactivity:	Human
Characteristics:	Antibody reactive against mammalian transfected lysate.

## Target Details

---

Target:	KLF8
Alternative Name:	KLF8 ( <a href="#">KLF8 Products</a> )
Background:	Full Gene Name: Kruppel-like factor 8 Synonyms: BKLF3,DKFZp686O08126,DXS741,MGC138314,ZNF741
Gene ID:	11279
NCBI Accession:	<a href="#">NM_007250</a>

## Application Details

---

Application Notes:	Optimal working dilution should be determined by the investigator.
Restrictions:	For Research Use only

## Handling

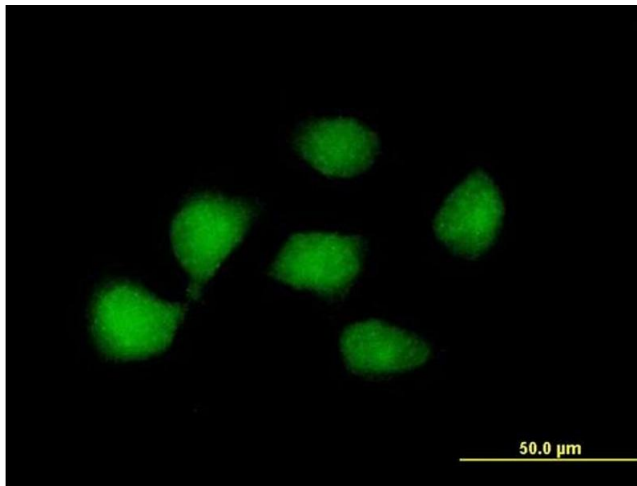
---

Buffer:	In 1x PBS, pH 7.4
Handling Advice:	Aliquot to avoid repeated freezing and thawing.
Storage:	-20 °C
Storage Comment:	Store at -20°C or lower. Aliquot to avoid repeated freezing and thawing.

## Publications

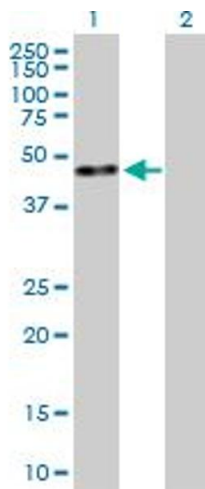
---

Product cited in:	Schnell, Romagna, Jaehnert, Albrecht, Eigenbrod, Juerchott, Kretzschmar, Tonn, Schichor: "Krüppel-like factor 8 (KLF8) is expressed in gliomas of different WHO grades and is essential for tumor cell proliferation." in: <b>PLoS ONE</b> , Vol. 7, Issue 1, pp. e30429, (2012) ( <a href="#">PubMed</a> ).
-------------------	--



### Immunofluorescence

**Image 1.** Immunofluorescence of purified MaxPab antibody to KLF8 on HeLa cell. [antibody concentration 10 ug/ml]



### Western Blotting

**Image 2.** Western Blot analysis of KLF8 expression in transfected 293T cell line by KLF8 MaxPab polyclonal antibody.

Lane 1: KLF8 transfected lysate(39.49 KDa).

Lane 2: Non-transfected lysate.