



[Go to Product page](#)

Datasheet for ABIN524741

anti-Elastase 4 antibody (AA 1-268)

1 Image

1 Publication

Overview

Quantity:	50 µg
Target:	Elastase 4 (CTRC)
Binding Specificity:	AA 1-268
Reactivity:	Human
Host:	Mouse
Clonality:	Polyclonal
Conjugate:	This Elastase 4 antibody is un-conjugated
Application:	Western Blotting (WB)

Product Details

Purpose:	Mouse polyclonal antibody raised against a full-length human CTRC protein.
Immunogen:	CTRC (NP_009203.2, 1 a.a. ~ 268 a.a) full-length human protein.
Sequence:	MLGITVLAAL LACASSCGVP SFPPNLSARV VGGEDARPHS WPWQISLQYL KNDTWRHTCG GTLIASNFVL TAAHCISNTR TYRVAVGKNN LEVEDEEGSL FVGVDTIHVH KRWNALLLRN DIALIKLAEH VELSDTIQVA CLPEKDSLLP KDYPYVTGW GRLWTNGPIA DKLQQGLQPV VDHATCSRID WWGFRVKKTM VCAGGDGVIS ACNGDSSGGL NCQLENGSWE VFGIVSFGSR RGCNTRKKPV VYTRVSAYID WINEKMQL
Cross-Reactivity:	Human
Characteristics:	Antibody reactive against mammalian transfected lysate.

Target Details

Target:	Elastase 4 (CTRC)
Alternative Name:	CTRC (CTRC Products)
Background:	Full Gene Name: chymotrypsin C (caldecrin) Synonyms: CLCR,ELA4
Gene ID:	11330
NCBI Accession:	NM_007272

Application Details

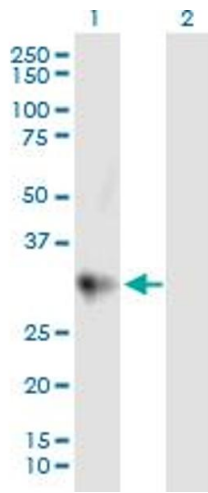
Application Notes:	Optimal working dilution should be determined by the investigator.
Restrictions:	For Research Use only

Handling

Buffer:	In 1x PBS, pH 7.4
Handling Advice:	Aliquot to avoid repeated freezing and thawing.
Storage:	-20 °C
Storage Comment:	Store at -20°C or lower. Aliquot to avoid repeated freezing and thawing.

Publications

Product cited in:	Wang, Sha, Liu, Chi: "Effect of chymotrypsin C and related proteins on pancreatic cancer cell migration." in: Acta biochimica et biophysica Sinica , Vol. 43, Issue 5, pp. 362-71, (2011) (PubMed).
-------------------	--



Western Blotting

Image 1. Western Blot analysis of CTCRC expression in transfected 293T cell line by CTCRC MaxPab polyclonal antibody.

Lane 1: CTCRC transfected lysate(29.48 KDa).

Lane 2: Non-transfected lysate.