



[Go to Product page](#)

Datasheet for ABIN524764
anti-TFEC antibody (AA 1-89)

3 Images

Overview

| | |
|----------------------|-------------------------------------|
| Quantity: | 100 µg |
| Target: | TFEC |
| Binding Specificity: | AA 1-89 |
| Reactivity: | Human |
| Host: | Mouse |
| Clonality: | Monoclonal |
| Conjugate: | This TFEC antibody is un-conjugated |
| Application: | ELISA, Western Blotting (WB) |

Product Details

| | |
|-------------------|---|
| Purpose: | Mouse monoclonal antibody raised against a partial recombinant TFEC. |
| Immunogen: | TFEC (NP_001018068.1, 1 a.a. ~ 89 a.a) partial recombinant protein with GST tag. MW of the GST tag alone is 26 KDa. |
| Sequence: | MTLDHQIINP TLKWSQPAVP SGGPLVQHAH TTLDSDAGLT ENPLTKLLAI GKEDDNAQWH LSGSILDVYS GEQGISPINM GLTSASCPS |
| Clone: | 4F11 |
| Isotype: | IgG2a |
| Cross-Reactivity: | Human |
| Characteristics: | Antibody Reactive Against Recombinant Protein. |

Target Details

| | |
|-------------------|---|
| Target: | TFEC |
| Alternative Name: | TFEC (TFEC Products) |
| Background: | Full Gene Name: transcription factor EC Synonyms: TC FEC,TFECL,bHLHe34 |
| Gene ID: | 22797 |
| NCBI Accession: | NM_001018058 |

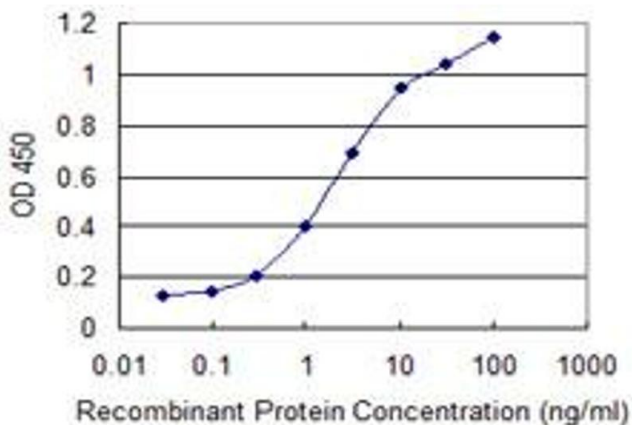
Application Details

| | |
|--------------------|--|
| Application Notes: | Optimal working dilution should be determined by the investigator. |
| Restrictions: | For Research Use only |

Handling

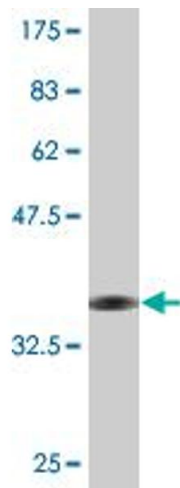
| | |
|------------------|--|
| Buffer: | In 1x PBS, pH 7.4 |
| Handling Advice: | Aliquot to avoid repeated freezing and thawing. |
| Storage: | -20 °C |
| Storage Comment: | Store at -20°C or lower. Aliquot to avoid repeated freezing and thawing. |

Images



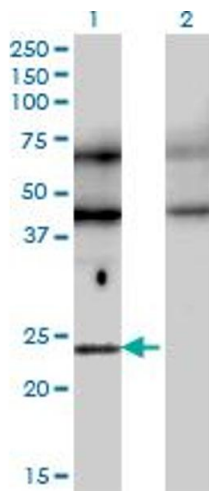
ELISA

Image 1. Detection limit for recombinant GST tagged TFEC is 0.1 ng/ml as a capture antibody.



Western Blotting

Image 2. Western Blot detection against Immunogen (35.53 KDa).



Western Blotting

Image 3. Western Blot analysis of TFEC expression in transfected 293T cell line by TFEC monoclonal antibody (M08), clone 4F11.

Lane 1: TFEC transfected lysate(22.7 KDa).

Lane 2: Non-transfected lysate.