



[Go to Product page](#)

Datasheet for ABIN524781  
**anti-PHLDA1 antibody (AA 1-259)**

2 Images

Overview

Quantity:	50 µg
Target:	PHLDA1
Binding Specificity:	AA 1-259
Reactivity:	Human
Host:	Mouse
Clonality:	Polyclonal
Conjugate:	This PHLDA1 antibody is un-conjugated
Application:	Western Blotting (WB), Immunofluorescence (IF)

Product Details

Purpose:	Mouse polyclonal antibody raised against a full-length human PHLDA1 protein.
Immunogen:	PHLDA1 (AAH18929.3, 1 a.a. ~ 259 a.a) full-length human protein.
Sequence:	MLESSGCKAL KEGVLEKRSD GLLQLWKKKC CILTEEGLLL IPPKQLQHQQ QQQQQQQQQQ QQPGQGPAEP SQPSGPAVAS LEPPVKLKL HFSNMKTVDK VERKGKMYMF TVVMAEGKEI DFRCPQDQGW NAEITLQMVQ YKNRQAILAV KSTRQKQHL VQQPPSQPQ PQPQLQPQPQ PQPQPQPQPQ SQPQPQPQPK PQPQLHPYP HPHPHPHSHP HSHPHPHPHP HPHQIPHPHP QPHSQPHGHR LLRSTSNSA
Cross-Reactivity:	Human
Characteristics:	Antibody reactive against mammalian transfected lysate.

## Target Details

Target:	PHLDA1
Alternative Name:	PHLDA1 ( <a href="#">PHLDA1 Products</a> )
Background:	Full Gene Name: pleckstrin homology-like domain, family A, member 1 Synonyms: DT1P1B11,MGC131738,PHRIP,TDAG51
Gene ID:	22822

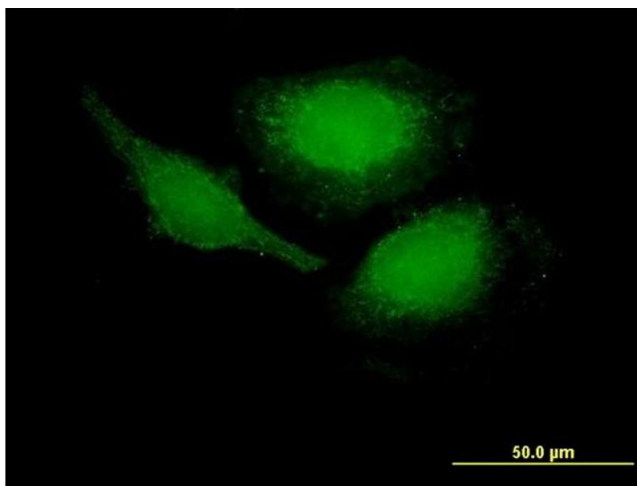
## Application Details

Application Notes:	Optimal working dilution should be determined by the investigator.
Restrictions:	For Research Use only

## Handling

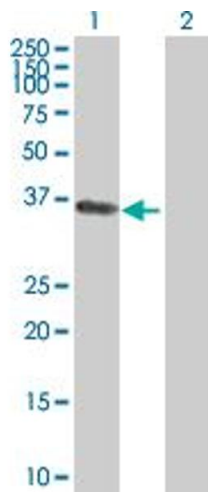
Buffer:	In 1x PBS, pH 7.4
Handling Advice:	Aliquot to avoid repeated freezing and thawing.
Storage:	-20 °C
Storage Comment:	Store at -20°C or lower. Aliquot to avoid repeated freezing and thawing.

## Images



### Immunofluorescence

**Image 1.** Immunofluorescence of purified MaxPab antibody to PHLDA1 on HeLa cell. [antibody concentration 10 ug/ml]



### Western Blotting

**Image 2.** Western Blot analysis of PHLDA1 expression in transfected 293T cell line by PHLDA1 MaxPab polyclonal antibody.

Lane 1: PHLDA1 transfected lysate(28.49 kDa).

Lane 2: Non-transfected lysate.