



[Go to Product page](#)

Datasheet for ABIN524811
anti-NLRP1 antibody (AA 1-1429)

1 Image

Overview

Quantity:	50 µg
Target:	NLRP1
Binding Specificity:	AA 1-1429
Reactivity:	Human
Host:	Mouse
Clonality:	Polyclonal
Conjugate:	This NLRP1 antibody is un-conjugated
Application:	Western Blotting (WB)

Product Details

Purpose:	Mouse polyclonal antibody raised against a full-length human NLRP1 protein.
Immunogen:	NLRP1 (NP_055737.1, 1 a.a. ~ 1429 a.a) full-length human protein.
Sequence:	MAGGAWGRLA CYLEFLKKEE LKEFQLLLAN KAHSRSSSGE TPAQPEKTSG MEVASYLVAQ YGEQRAWDLA LHTWEQMGLR SLCAQAQEGA GHSPSPFYSP SEPHLGSPSQ PTSTAVLMPW IHELPAGCTQ GSERRVLRQL PDTSGRRWRE ISASLLYQAL PSSPDHESPS QESPNAPTST AVLGSWGSPP QPSLAPREQE APGTQWPLDE TSGIYYTEIR EREREKSEKG RPPWAAVVG PPQAHTSLQP HHPWEPSVR ESLCSTWPWK NEDFNQKFTQ LLLLQRPHPR SQDPLVKRSW PDYVEENRGH LIEIRDLFGP GLDTQEPRIV ILQGAAGIGK STLARQVKEA WGRGQLYGDR FQHVYFYSR ELAQSKVVS L AELIGKDGT A TPAPIRQILS RPERLLFILD GVDEPGWVLQ EPSELCLHW SQPQPADALL GSLLGKTILP EASFLITART TALQNLIPSL EQARWVEVLG FSESSRKEYF YRYFTDERQA IRAFRLVKS N KELWALCLVP WWSWLACTCL MQQMKRKEKL TLTSKTTTTL CLHYLAQALQ AQPLGPQLRD LCSLAAEGIW QKKTTFSPDD LRKHGLDGAI

Product Details

ISTFLKMGIL QEHPISLSYS FIHLCFQEFF AAMSYVLEDE KGRGKHSNCI IDLEKTLEAY
GIHGLFGAST TRFLLGLLSD EGEREMENIF HCRLSQGRNL MQWVPSLQLL LQPHSLESLSH
CLYETRKNKTF LTQVMAHFEE MGMCVETDME LLVCTFCIKF SRHVKKLQLI EGRQHRSTWS
PTMWLFRWV PVTDAYWQIL FSVLKVTRNL KELDLSGNSL SHSAVKSLCK TLRRPRCLLE
TLRLAGCGLT AEDCKDLAFG LРАНQTLTEL DLSFNVLTDА GAKHLCQRLR QPSCKLQRLQ
LVSCGLTSDC CQDLASVLSA SPSLKELDLQ QNNLDDVGVR LLCEGLRHPA CKLIRLGLDQ
TTLSDEMРQE LRALEQEKPQ LLIFSRRKPS VMTPT EGLDT GEMSNSTSSL KRQRLGSERA
ASHVAQANLK LLDVSKIFPI AEIAEESSPE VVPVELLCVP SPASQGDЛHT KPLGTDDDFW
GPTGPVATEV VDKEKNLYRV HFPVAGSYRW PNTGLCFVMR EAVTVEIEFC VWDQFLGEIN
PQHСWMVAGP LLDIKAEPGA VEAVHLPHFV ALQGGHVDTС LFQMAHFKEE GMLLEKPARV
ELHHIVLENP SFSPLGVLLK MIHNALRFIP VTSVLLYHR VHPEEVTFHL YLIPSDCSIR
KELELCYRSP GEDQLFSEFY VGHLGSGIRL QVKDKKDETL VWEALVKPGD LMPATTLIPP
ARIAVPSPLD APQLLHFVDQ YREQLIARVT SVEVLDKLH GQVLSQEQYE RVLAENTRPS
QMRKLFSLSQ SWDRKCKDGL YQALKETHPH LIMELWEKGS KKGLLPLSS

Cross-Reactivity:	Human
Characteristics:	Antibody reactive against mammalian transfected lysate.

Target Details

Target:	NLRP1
Alternative Name:	NLRP1 (NLRP1 Products)
Background:	Full Gene Name: NLR family, pyrin domain containing 1 Synonyms: CARD7,CLR17.1,DEFCAP,DEFCAP- L/S,DKFZp58601822,KIAA0926,NAC,NALP1,PP1044,SLEV1,VAMAS1
Gene ID:	22861
NCBI Accession:	NM_014922
Pathways:	Positive Regulation of Endopeptidase Activity, Inflammasome

Application Details

Application Notes:	Optimal working dilution should be determined by the investigator.
Restrictions:	For Research Use only

Handling

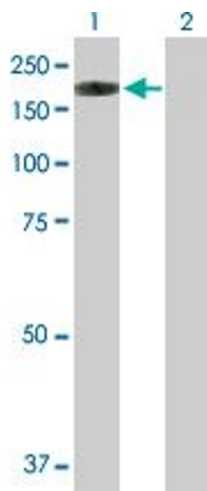
Buffer: In 1x PBS, pH 7.4

Handling Advice: Aliquot to avoid repeated freezing and thawing.

Storage: -20 °C

Storage Comment: Store at -20°C or lower. Aliquot to avoid repeated freezing and thawing.

Images



Western Blotting

Image 1. Western Blot analysis of NLRP1 expression in transfected 293T cell line by NLRP1 MaxPab polyclonal antibody.

Lane 1: NALP1 transfected lysate(157.19 KDa).

Lane 2: Non-transfected lysate.