



[Go to Product page](#)

Datasheet for ABIN524814
anti-R3HDM2 antibody (AA 1-637)

2 Images

Overview

Quantity:	50 µg
Target:	R3HDM2
Binding Specificity:	AA 1-637
Reactivity:	Human
Host:	Mouse
Clonality:	Polyclonal
Conjugate:	This R3HDM2 antibody is un-conjugated
Application:	Western Blotting (WB), Immunofluorescence (IF)

Product Details

Purpose:	Mouse polyclonal antibody raised against a full-length human R3HDM2 protein.
Immunogen:	R3HDM2 (NP_055740.2, 1 a.a. ~ 637 a.a) full-length human protein.
Sequence:	MRPPVTKASS FSGISILTRG DSIGSSKGGG AGRISRPGMA LGAPEVCNQV TSSQSVRGLL PCTAQQQQQQ QQQQLPALPP TPQQQPPLNN HMISQADDLS NPFQQMSLSR QGSTAADPS AALFQTPLIS QHPQTSFIM ASTGQPLPTS NYSTSSHAPP TQQVLPPQGY MQPPQIQVS YPPGQYPNS NQYRPLSHP VAYSPQRGQQ LPQPSQQPGL QPMMPNQQQA AYQGMIGVQQ PQNQGLLSSQ RSSMGGQMKG LVVQYTPLPS YQVPVGSQSQ NVVQPPFQQP MLVPVSQSVQ GGLPAAGVPV YYSMIPPAQQ NGTSPSVGFL QPPGSEQYQM PQSPSPCSPP QMPQQYSGVS PSGPGVVVMQ LNVPNGPQPP QNPSMVQWSH CKYYSMDQRG QKPGDLYSPD SSPQANTQMS SSPVTSPQTS PAPSPTSLS SVCTGLSPLP VLTQFPRPGG PAQGDGRYSL LGQPLQYNLS ICPPLLHGQS TYTVHQGQSG LKHGNRGKRQ ALKSASTDLG TADVVLGRVL EVDLPEGIT RTEADKLFTQ LAMSGAKIQW LKDAQGLPGG GGGDNSGTAE NGRHSDLAAL YTIVAVFPSP

Product Details

LAAQNASLRL NNSVSRFKLR MAKKNYDLRI LERASSQ

Cross-Reactivity: Human

Characteristics: Antibody reactive against mammalian transfected lysate.

Target Details

Target: R3HDM2

Alternative Name: R3HDM2 ([R3HDM2 Products](#))

Background: Full Gene Name: R3H domain containing 2
Synonyms: KIAA1002,PR01365

Gene ID: 22864

NCBI Accession: [NM_014925](#)

Application Details

Application Notes: Optimal working dilution should be determined by the investigator.

Restrictions: For Research Use only

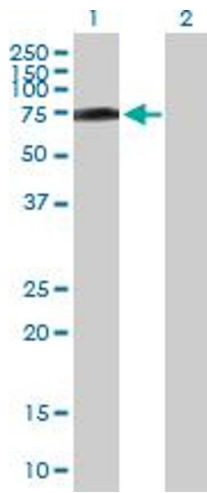
Handling

Buffer: In 1x PBS, pH 7.4

Handling Advice: Aliquot to avoid repeated freezing and thawing.

Storage: -20 °C

Storage Comment: Store at -20°C or lower. Aliquot to avoid repeated freezing and thawing.

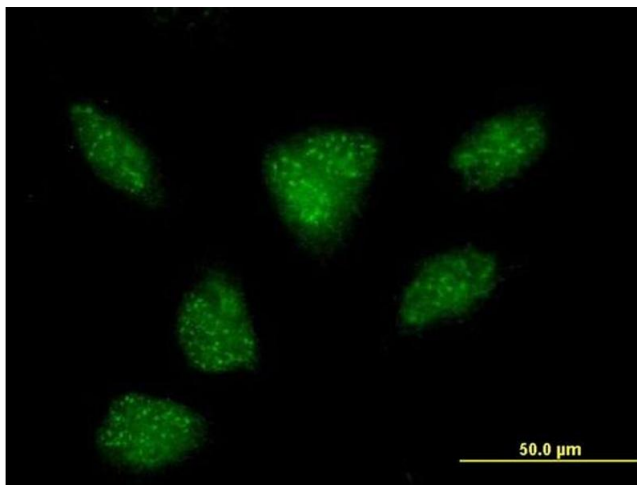


Western Blotting

Image 1. Western Blot analysis of R3HDM2 expression in transfected 293T cell line by R3HDM2 MaxPab polyclonal antibody.

Lane 1: KIAA1002 transfected lysate(70.07 KDa).

Lane 2: Non-transfected lysate.



Immunofluorescence

Image 2. Immunofluorescence of purified MaxPab antibody to R3HDM2 on HeLa cell. [antibody concentration 10 ug/ml]