



[Go to Product page](#)

Datasheet for ABIN524818
anti-PLEKHA6 antibody (AA 1-30)

2 Images

Overview

Quantity:	100 µg
Target:	PLEKHA6
Binding Specificity:	AA 1-30
Reactivity:	Human
Host:	Mouse
Clonality:	Monoclonal
Conjugate:	This PLEKHA6 antibody is un-conjugated
Application:	Western Blotting (WB), ELISA

Product Details

Purpose:	Mouse monoclonal antibody raised against a full-length recombinant PLEKHA6.
Immunogen:	PLEKHA6 (AAH10522.1, 1 a.a. ~ 30 a.a) full-length recombinant protein with GST tag. MW of the GST tag alone is 26 KDa.
Sequence:	MHPRWAARLP LFISLLERAD SVTAAYAKQH
Clone:	1A4
Isotype:	IgG1
Cross-Reactivity:	Human
Characteristics:	Antibody Reactive Against Recombinant Protein.

Target Details

Target:	PLEKHA6
Alternative Name:	PLEKHA6 (PLEKHA6 Products)
Background:	Full Gene Name: pleckstrin homology domain containing, family A member 6 Synonyms: KIAA0969,MGC176733,PEPP3
Gene ID:	22874

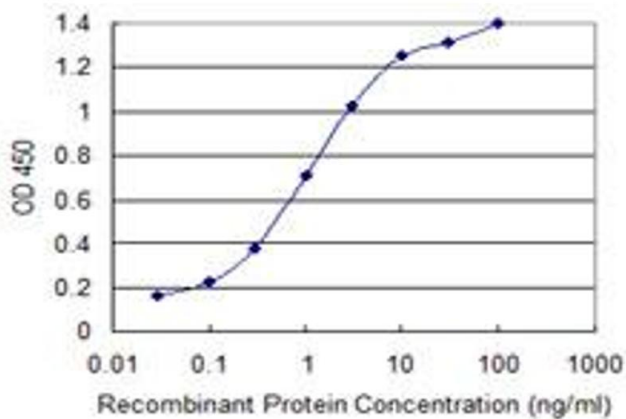
Application Details

Application Notes:	Optimal working dilution should be determined by the investigator.
Restrictions:	For Research Use only

Handling

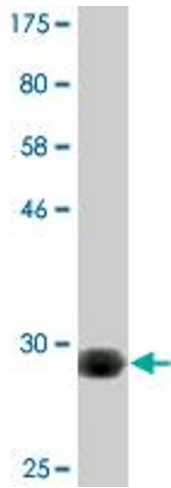
Buffer:	In 1x PBS, pH 7.4
Handling Advice:	Aliquot to avoid repeated freezing and thawing.
Storage:	-20 °C
Storage Comment:	Store at -20°C or lower. Aliquot to avoid repeated freezing and thawing.

Images



ELISA

Image 1. Detection limit for recombinant GST tagged PLEKHA6 is 0.03 ng/ml as a capture antibody.



Western Blotting

Image 2. Western Blot detection against Immunogen (29.04 kDa).