



[Go to Product page](#)

Datasheet for ABIN524822
anti-MON1B antibody (AA 1-547)

2 Images

Overview

Quantity:	50 µg
Target:	MON1B
Binding Specificity:	AA 1-547
Reactivity:	Human
Host:	Mouse
Clonality:	Polyclonal
Conjugate:	This MON1B antibody is un-conjugated
Application:	Western Blotting (WB)

Product Details

Purpose:	Mouse polyclonal antibody raised against a full-length human MON1B protein.
Immunogen:	MON1B (NP_055755, 1 a.a. ~ 547 a.a) full-length human protein.
Sequence:	MEVGGDTAAP APGGAEDLED TQFPSEEARE GGGVHAVPPD PEDEGLEETG SKDKDQPPSP SPPPQSEALS STSRLWSPAA PENSPTCSPE SSSGGQGGDP SDEEWRSQRK HVFVLSEAGK PIYSRYGSVE ALSATMGVMT ALVSFVQSAG DAIRAIYAED HKLVFLQQGP LLLVAMSRTS QSAAQLRGEL LAVHAQIVST LTRASVARIF AHKQNYDLRR LLAGSERTLD RLLDSMEQDP GALLLGAVRC VPLARPLRDA LGALLRRECTA PGLALSVLAV GGRLITAAQE RNVLAECRLD PADLQLLLDW VGAPAFAGE AWAPVCLPRF NPDGFFYAYV ARLDAMPVCL LLLGTQREAF HAMAACRRLV EDGMHALGAM RALGEEAASF NASSASAPAY SVQAVGAPGL RHFLYKPLDI PDHHRQLPQF TSPELEAPYS REEERQLSD LYHRLHARLH STSRPLRLIY HVAEKETLLA WVTSKFELYT CLSPLVTKAG AILVVTKLLR WVKKEEDRLF IRYPPKYSTP PATSTDQAAH NGLFTGL

Product Details

Cross-Reactivity:	Human
Characteristics:	Antibody reactive against mammalian transfected lysate.

Target Details

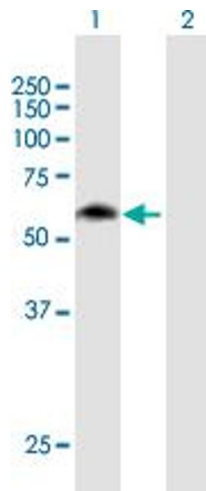
Target:	MON1B
Alternative Name:	MON1B (MON1B Products)
Background:	Full Gene Name: MON1 homolog B (yeast) Synonyms: HSRG1,SAND2
Gene ID:	22879
NCBI Accession:	NM_014940

Application Details

Application Notes:	Optimal working dilution should be determined by the investigator.
Restrictions:	For Research Use only

Handling

Buffer:	In 1x PBS, pH 7.4
Handling Advice:	Aliquot to avoid repeated freezing and thawing.
Storage:	-20 °C
Storage Comment:	Store at -20°C or lower. Aliquot to avoid repeated freezing and thawing.

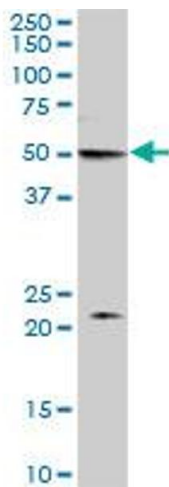


Western Blotting

Image 1. Western Blot analysis of MON1B expression in transfected 293T cell line by MON1B MaxPab polyclonal antibody.

Lane 1: MON1B transfected lysate(60.17 KDa).

Lane 2: Non-transfected lysate.



Western Blotting

Image 2. MON1B MaxPab polyclonal antibody. Western Blot analysis of MON1B expression in human kidney.