



[Go to Product page](#)

Datasheet for ABIN524838

## anti-CARD8 antibody (AA 1-392)

### 2 Images

#### Overview

Quantity:	100 µL
Target:	CARD8
Binding Specificity:	AA 1-392
Reactivity:	Human
Host:	Rabbit
Clonality:	Polyclonal
Conjugate:	This CARD8 antibody is un-conjugated
Application:	Western Blotting (WB), Immunoprecipitation (IP)

#### Product Details

Purpose:	Rabbit polyclonal antibody raised against a full-length human CARD8 protein.
Immunogen:	CARD8 (AAH56891.1, 1 a.a. ~ 392 a.a) full-length human protein.
Sequence:	MEKKECPEKS SSSEEELPRR DSGSSRNIDA SKLIRLQGSR KLLVDNSIRE LQYTKTGIFF QAEACVTNDT VYRELPCVSE TLCDISHFFQ EDDETEAEP LFRVAPQCQL SGGDIPSVSE EQESSEGQDS GDICSEENQI VSSYASKVCF EIEEDYKNRQ FLGPEGNVDV ELIDKSTNRY SVWFPTAGWY LWSATGLGFL VRDEVTVTIA FGSWSQHLAL DLQHHEQWL VGGPLFDVTAE PEEAVAEIHL PHSISLQAGE VDVSWFLVAH FKNEGMVLEH PARVEPFYAV LESPSFSLMG ILLRIASGTR LSIPITSNTL IYYHPHPEDI KFHLYL VPSD ALLTKAIDDE EDRFHGVRLQ TSPPM EPLNF GSSYIVSNSA NLKVMPKWIS SL
Cross-Reactivity:	Human
Characteristics:	Antibody reactive against mammalian transfected lysate.

## Target Details

Target:	CARD8
Alternative Name:	CARD8 ( <a href="#">CARD8 Products</a> )
Background:	Full Gene Name: caspase recruitment domain family, member 8 Synonyms: CARDINAL,DACAR,DKFZp779L0366,Dakar,FLJ18119,FLJ18121,KIAA0955,MGC57162,NDPP,NDPP1,TUCAN
Gene ID:	22900
Pathways:	<a href="#">Positive Regulation of Endopeptidase Activity</a>

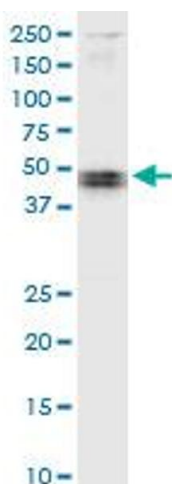
## Application Details

Application Notes:	Optimal working dilution should be determined by the investigator.
Restrictions:	For Research Use only

## Handling

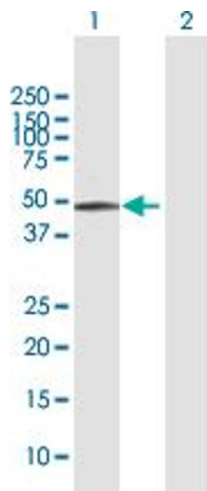
Format:	Liquid
Buffer:	No additive
Preservative:	Without preservative
Handling Advice:	Aliquot to avoid repeated freezing and thawing.
Storage:	-20 °C
Storage Comment:	Store at -20°C or lower. Aliquot to avoid repeated freezing and thawing.

## Images



### Immunoprecipitation

**Image 1.** Immunoprecipitation of CARD8 transfected lysate using anti-CARD8 MaxPab rabbit polyclonal antibody and Protein A Magnetic Bead , and immunoblotted with CARD8 purified MaxPab mouse polyclonal antibody (B01P) .



### Western Blotting

**Image 2.** Western Blot analysis of CARD8 expression in transfected 293T cell line by CARD8 MaxPab polyclonal antibody.

Lane 1: CARD8 transfected lysate(44 KDa).

Lane 2: Non-transfected lysate.