



Datasheet for ABIN524855  
**anti-MAPRE1 antibody (AA 1-110)**



[Go to Product page](#)

1 Image

1 Publication

### Overview

Quantity:	100 µg
Target:	MAPRE1
Binding Specificity:	AA 1-110
Reactivity:	Human
Host:	Mouse
Clonality:	Monoclonal
Conjugate:	This MAPRE1 antibody is un-conjugated
Application:	ELISA

### Product Details

Purpose:	Mouse monoclonal antibody raised against a partial recombinant MAPRE1.
Immunogen:	MAPRE1 (NP_036457, 1 a.a. ~ 110 a.a) partial recombinant protein with GST tag. MW of the GST tag alone is 26 KDa.
Sequence:	MAVNVYSTSV TSDNLSRHDM LAWINESLQL NLTKIEQLCS GAAYCQFMDM LFGSIALKK VKFQAKLEHE YIQNFKILQA GFKRMGVDKI IPVDKLVKGG FQDNFEFVQW
Clone:	4F3
Isotype:	IgG2a
Cross-Reactivity:	Human
Characteristics:	Antibody Reactive Against Recombinant Protein.

## Target Details

---

Target:	MAPRE1
Alternative Name:	MAPRE1 ( <a href="#">MAPRE1 Products</a> )
Background:	Full Gene Name: microtubule-associated protein, RP/EB family, member 1 Synonyms: EB1,MGC117374,MGC129946
Gene ID:	22919
NCBI Accession:	<a href="#">NM_012325</a>
Pathways:	<a href="#">M Phase</a>

## Application Details

---

Application Notes:	Optimal working dilution should be determined by the investigator.
Restrictions:	For Research Use only

## Handling

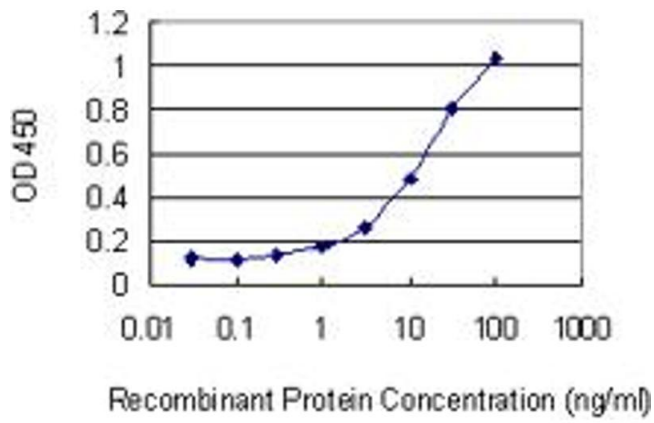
---

Buffer:	In 1x PBS, pH 7.4
Handling Advice:	Aliquot to avoid repeated freezing and thawing.
Storage:	-20 °C
Storage Comment:	Store at -20°C or lower. Aliquot to avoid repeated freezing and thawing.

## Publications

---

Product cited in:	Nogueira da Costa, Mijal, Keen, Findlay, Wild: "Proteomic analysis of the effects of the immunomodulatory mycotoxin deoxynivalenol." in: <b>Proteomics</b> , Vol. 11, Issue 10, pp. 1903-14, (2011) ( <a href="#">PubMed</a> ).
-------------------	---



### ELISA

**Image 1.** Detection limit for recombinant GST tagged MAPRE1 is 0.3 ng/ml as a capture antibody.