



[Go to Product page](#)

Datasheet for ABIN524859
anti-ATF6 antibody (AA 1-202)

2 Images

Overview

Quantity:	50 µg
Target:	ATF6
Binding Specificity:	AA 1-202
Reactivity:	Human
Host:	Mouse
Clonality:	Polyclonal
Conjugate:	This ATF6 antibody is un-conjugated
Application:	Western Blotting (WB), Immunofluorescence (IF)

Product Details

Purpose:	Mouse polyclonal antibody raised against a full-length human ATF6 protein.
Immunogen:	ATF6 (AAH14969.1, 1 a.a. ~ 202 a.a) full-length human protein.
Sequence:	MGEPAGVAGT MESPFPGLF HRLDEDWDSA LFAELGYFTD TDELQLEAAN ETYENNFNDL DFDLDLVPWE SDIWDINNQI CTVKDIKAEQ QPLSPASSSY SVSSPRSVDS YSSTQHVPEE LDLSSSSQMS PLSLYGENSN SLSSAEPLKE DKPVTGPRNK TENGLTPKKK IQVNSKPSIQ PKPLLLPAAP KTQTISSIPP QT
Cross-Reactivity:	Human
Characteristics:	Antibody reactive against mammalian transfected lysate.

Target Details

Target:	ATF6
---------	------

Target Details

Alternative Name:	ATF6 (ATF6 Products)
Background:	Full Gene Name: activating transcription factor 6 Synonyms: ATF6A
Gene ID:	22926
Pathways:	ER-Nucleus Signaling, Unfolded Protein Response

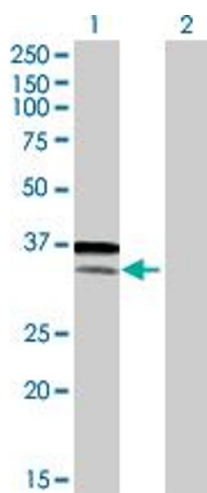
Application Details

Application Notes:	Optimal working dilution should be determined by the investigator.
Restrictions:	For Research Use only

Handling

Buffer:	In 1x PBS, pH 7.4
Handling Advice:	Aliquot to avoid repeated freezing and thawing.
Storage:	-20 °C
Storage Comment:	Store at -20°C or lower. Aliquot to avoid repeated freezing and thawing.

Images

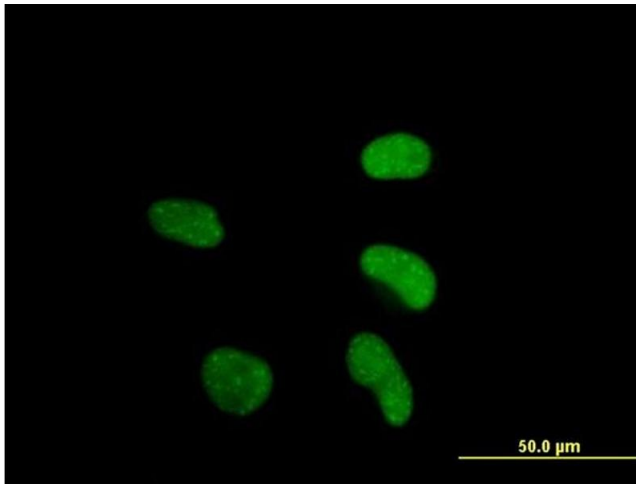


Western Blotting

Image 1. Western Blot analysis of ATF6 expression in transfected 293T cell line by ATF6 MaxPab polyclonal antibody.

Lane 1: ATF6 transfected lysate(22.22 KDa).

Lane 2: Non-transfected lysate.



Immunofluorescence

Image 2. Immunofluorescence of purified MaxPab antibody to ATF6 on HeLa cell. [antibody concentration 10 ug/ml]