



[Go to Product page](#)

Datasheet for ABIN524885

anti-NADAP antibody (AA 1-796)

3 Images

Overview

Quantity:	50 µg
Target:	NADAP (SLC4A1AP)
Binding Specificity:	AA 1-796
Reactivity:	Human
Host:	Mouse
Clonality:	Polyclonal
Conjugate:	This NADAP antibody is un-conjugated
Application:	Western Blotting (WB), Immunofluorescence (IF)

Product Details

Purpose:	Mouse polyclonal antibody raised against a full-length human SLC4A1AP protein.
Immunogen:	SLC4A1AP (NP_060628.1, 1 a.a. ~ 796 a.a) full-length human protein.
Sequence:	MLAPLRNAPG REGATSPSPPT TDATGSLGEW DVDRNVKTEG WWSKERISKL HRLRMADILS QSETLASQDL SGDFKPKALP VSPAARSKAP ASSSSNPPEEV QKEGPTALQD SNSGEPDIPP PQPDCGDFRS LQEEQSRPPT AVSSPGGPAR APPYQEPWPW GPATAPYSLE TLKGGTILGT RSLKGTSYCL FGRLSGCDVC LEHPSVSRYPH AVLQHRASGP DGECDNSNGPG FYLYDLGSTH GTFLNKTRIP PRTYCRVHVG HVVRFGGSTR LFILQGPEED REAESELTVT QLKELRKQQQ ILLEKKMLGE DSDEEEEMDT SERKINAGSQ DDEMGCTWGM GEDAVEDDAE ENPIVLEFQQ EREAIFYIKDP KKALQGFFDR EGEELEYEFD EQGHSTWLCR VRLPVDDSTG KQLVAEAIHS GKKKEAMIQC SLEACRILDT LGLLRQEAVS RKRKAKNWED EDFYDSDDDT FLDRTGLIEK KRLNRMKKAG KIDEKPETFE SLVAKLNDAE RELSEISERL KASSQVLSSES PSQDSLDAFM SEMKSGSTLD GVSRRKHLHLR TFE LRKEQQR LKGLIKIVKP AEIPELKKTE TQTTGAENKA

Product Details

KKLTLPLFGA MKGGSKFKLK TGTVGKLPK RPELPPTLMR MKDEPEVEEEE EEEEEEEKE
KEEHEKKKLE DGSLSRPQPE IEPEAAVQEM RPPTDLTHFK ETQTHENMSQ LSEEEQNKDY
QDCSKTTS LC AGPSASKNEY EKSRGELKKK KTPGPGKLPP TLSSKYPEDD PDYCVWVPPE
GQSGDGRTHL NDKYGY

Cross-Reactivity: Human

Characteristics: Antibody reactive against mammalian transfected lysate.

Target Details

Target: NADAP (SLC4A1AP)

Alternative Name: SLC4A1AP ([SLC4A1AP Products](#))

Background: Full Gene Name: solute carrier family 4 (anion exchanger), member 1, adaptor protein
Synonyms: FLJ10624,FLJ41004,HLC3,MGC120646,MGC120648

Gene ID: 22950

NCBI Accession: [NM_018158](#)

Application Details

Application Notes: Optimal working dilution should be determined by the investigator.

Restrictions: For Research Use only

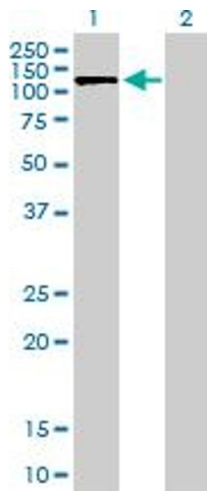
Handling

Buffer: In 1x PBS, pH 7.4

Handling Advice: Aliquot to avoid repeated freezing and thawing.

Storage: -20 °C

Storage Comment: Store at -20°C or lower. Aliquot to avoid repeated freezing and thawing.

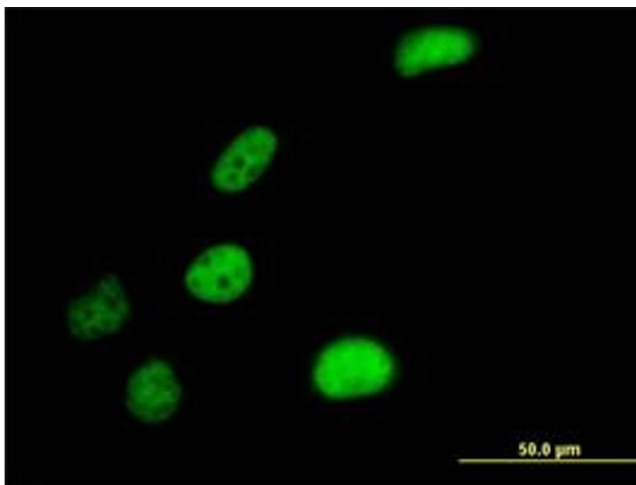


Western Blotting

Image 1. Western Blot analysis of SLC4A1AP expression in transfected 293T cell line by SLC4A1AP MaxPab polyclonal antibody.

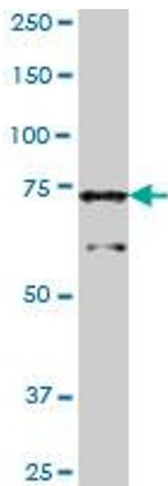
Lane1:SLC4A1AP transfected lysate(87.56 KDa).

Lane2:Non-transfected lysate.



Immunofluorescence

Image 2. Immunofluorescence of purified MaxPab antibody to SLC4A1AP on HeLa cell. (antibody concentration 10 μg/mL)



Western Blotting

Image 3. SLC4A1AP MaxPab polyclonal antibody. Western Blot analysis of SLC4A1AP expression in human placenta.