



Datasheet for ABIN524886
anti-NADAP antibody (AA 154-254)



[Go to Product page](#)

3 Images

Overview

Quantity:	100 µg
Target:	NADAP (SLC4A1AP)
Binding Specificity:	AA 154-254
Reactivity:	Human
Host:	Mouse
Clonality:	Monoclonal
Conjugate:	This NADAP antibody is un-conjugated
Application:	Western Blotting (WB), ELISA

Product Details

Purpose:	Mouse monoclonal antibody raised against a partial recombinant SLC4A1AP.
Immunogen:	SLC4A1AP (NP_060628, 154 a.a. ~ 254 a.a) partial recombinant protein with GST tag. MW of the GST tag alone is 26 KDa.
Sequence:	YQEPPWGGPA TAPYSLETLK GGTILGTRSL KGTSYCLFGR LSGCDVCLEH PSVSRYPHAVL QHRASGPDGE CDSNGPGFYLYDLGSTHGTF LNKTRIPPR Y
Clone:	2G10
Isotype:	IgG2a
Cross-Reactivity:	Human
Characteristics:	Antibody Reactive Against Recombinant Protein.

Target Details

Target:	NADAP (SLC4A1AP)
Alternative Name:	SLC4A1AP (SLC4A1AP Products)
Background:	Full Gene Name: solute carrier family 4 (anion exchanger), member 1, adaptor protein Synonyms: FLJ10624,FLJ41004,HLC3,MGC120646,MGC120648
Gene ID:	22950
NCBI Accession:	NM_018158

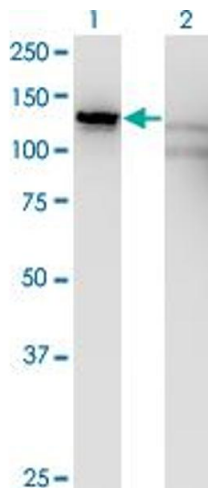
Application Details

Application Notes:	Optimal working dilution should be determined by the investigator.
Restrictions:	For Research Use only

Handling

Buffer:	In 1x PBS, pH 7.4
Handling Advice:	Aliquot to avoid repeated freezing and thawing.
Storage:	-20 °C
Storage Comment:	Store at -20°C or lower. Aliquot to avoid repeated freezing and thawing.

Images

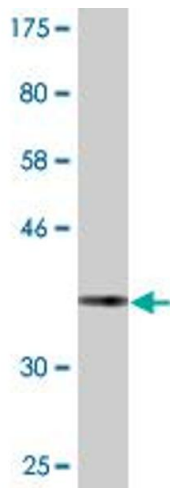


Western Blotting

Image 1. Western Blot analysis of SLC4A1AP expression in transfected 293T cell line by SLC4A1AP monoclonal antibody (M01), clone 2G10.

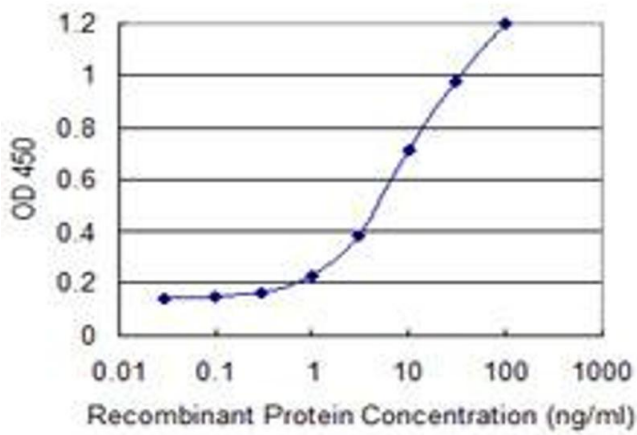
Lane 1: SLC4A1AP transfected lysate (Predicted MW: 88.8 kDa).

Lane 2: Non-transfected lysate.



Western Blotting

Image 2. Western Blot detection against Immunogen (36.85 KDa).



ELISA

Image 3. Detection limit for recombinant GST tagged SLC4A1AP is 0.3 ng/ml as a capture antibody.