



[Go to Product page](#)

Datasheet for ABIN524906  
**anti-SV2C antibody (AA 2-101)**

2 Images

1 Publication

### Overview

Quantity:	100 µg
Target:	SV2C
Binding Specificity:	AA 2-101
Reactivity:	Human
Host:	Mouse
Clonality:	Monoclonal
Conjugate:	This SV2C antibody is un-conjugated
Application:	Western Blotting (WB), ELISA

### Product Details

Purpose:	Mouse monoclonal antibody raised against a partial recombinant SV2C.
Immunogen:	SV2C (XP_043493, 2 a.a. ~ 101 a.a) partial recombinant protein with GST tag. MW of the GST tag alone is 26 KDa.
Sequence:	EDSYKDRTSL MKGAKDIARE VKKQTVKKVN QAVDRAQDEY TQRSYSRFQD EEDDDYYPA GETYNGEAND DEGSSEATEG HDEDDEIYEG EYQGIPSMNQ
Clone:	3D8
Isotype:	IgG2a
Cross-Reactivity:	Human
Characteristics:	Antibody Reactive Against Recombinant Protein.

## Target Details

---

Target:	SV2C
Alternative Name:	SV2C ( <a href="#">SV2C Products</a> )
Background:	Full Gene Name: synaptic vesicle glycoprotein 2C Synonyms: MGC118874,MGC118875,MGC118876,MGC118877
Gene ID:	22987
NCBI Accession:	<a href="#">XM_043493</a>

## Application Details

---

Application Notes:	Optimal working dilution should be determined by the investigator.
Restrictions:	For Research Use only

## Handling

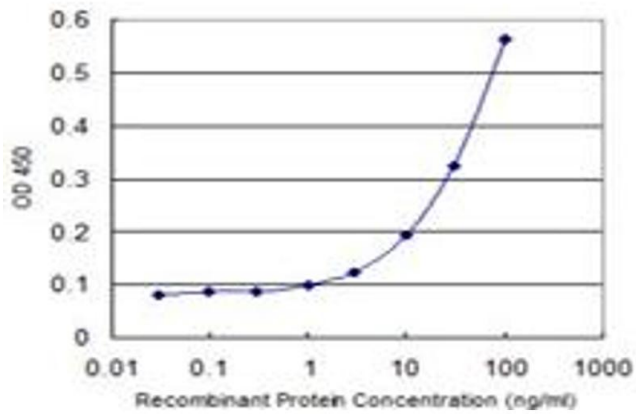
---

Buffer:	In 1x PBS, pH 7.4
Handling Advice:	Aliquot to avoid repeated freezing and thawing.
Storage:	-20 °C
Storage Comment:	Store at -20°C or lower. Aliquot to avoid repeated freezing and thawing.

## Publications

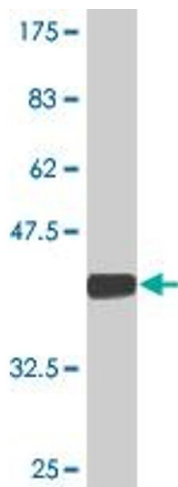
---

Product cited in:	Crèvecoeur, Kaminski, Rogister, Foerch, Vandenplas, Neveux, Mazzuferi, Kroonen, Poulet, Martin, Sadzot, Rikir, Klitgaard, Moonen, Deprez: "Expression pattern of synaptic vesicle protein 2 (SV2) isoforms in patients with temporal lobe epilepsy and hippocampal sclerosis." in: <b>Neuropathology and applied neurobiology</b> , Vol. 40, Issue 2, pp. 191-204, (2014) ( <a href="#">PubMed</a> ).
-------------------	---



### ELISA

**Image 1.** Detection limit for recombinant GST tagged SV2C is 1 ng/ml as a capture antibody.



### Western Blotting

**Image 2.** Western Blot detection against Immunogen (36.74 kDa) .