



Datasheet for ABIN524912 **anti-STK38L antibody (AA 1-464)**



[Go to Product page](#)

1 Image

Overview

Quantity:	50 µg
Target:	STK38L
Binding Specificity:	AA 1-464
Reactivity:	Human
Host:	Mouse
Clonality:	Polyclonal
Conjugate:	This STK38L antibody is un-conjugated
Application:	Western Blotting (WB)

Product Details

Purpose:	Mouse polyclonal antibody raised against a full-length human STK38L protein.
Immunogen:	STK38L (NP_055815.1, 1 a.a. ~ 464 a.a) full-length human protein.
Sequence:	MAMTAGTTTT FPMSNHTRRER VTVAKLTLEN FYSNLILQHE ERETRQKKLE VAMEEEGLAD EEKLRRSQH ARKETEFRLR KRTRLGLDDF ESLKVIGRGA FGEVRLVQKK DTGHIYAMKI LRKSDMLEKE QVAHIRAERD ILVEADGAWV VKMFYSFQDK RNLYLIMEFL PGGDMMTLLM KKDTLTEEET QFYISETVLA IDAIHQLGFI HRDIKPDNLL LDAKGHVKLS DFGLCTGLKK AHRTEFYRNL THNPPSDFSF QNMNSKRKAE TWKKNRRQLA YSTVGTDPDI APEVFMQTGY NKLCDWWSLG VIMYEMLIGY PPFCSERPQE TYRKVMNWKE TLVFPPEVPI SEKAKDLILR FCIDSENRIK NSGVVEIKGH PFFEGVDWEH IRERPAAIPI EIKSIDDTSN FDDFPESDIL QPVPNTTEPD YKSKDWVFLN YTYKRFEGLT QRGSIPTYMK AGKL
Cross-Reactivity:	Human

Product Details

Characteristics: Antibody reactive against mammalian transfected lysate.

Target Details

Target: STK38L

Alternative Name: STK38L ([STK38L Products](#))

Background: Full Gene Name: serine/threonine kinase 38 like
Synonyms: KIAA0965,NDR2

Gene ID: 23012

NCBI Accession: [NM_015000](#)

Application Details

Application Notes: Optimal working dilution should be determined by the investigator.

Restrictions: For Research Use only

Handling

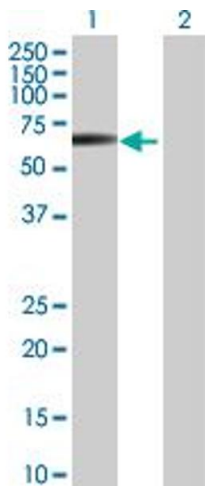
Buffer: In 1x PBS, pH 7.4

Handling Advice: Aliquot to avoid repeated freezing and thawing.

Storage: -20 °C

Storage Comment: Store at -20°C or lower. Aliquot to avoid repeated freezing and thawing.

Images



Western Blotting

Image 1. Western Blot analysis of STK38L expression in transfected 293T cell line by STK38L MaxPab polyclonal antibody.

Lane 1: STK38L transfected lysate(51.04 KDa).

Lane 2: Non-transfected lysate.