



[Go to Product page](#)

Datasheet for ABIN524925  
**anti-KDM4B antibody (AA 1-1096)**

1 Image

Overview

Quantity:	50 µg
Target:	KDM4B
Binding Specificity:	AA 1-1096
Reactivity:	Human
Host:	Mouse
Clonality:	Polyclonal
Conjugate:	This KDM4B antibody is un-conjugated
Application:	Western Blotting (WB)

Product Details

Purpose:	Mouse polyclonal antibody raised against a full-length human KDM4B protein.
Immunogen:	KDM4B (NP_055830.1, 1 a.a. ~ 1096 a.a) full-length human protein.
Sequence:	MGSEDHGAQN PSCKIMTFRP TMEEFKDFNK YVAYIESQGA HRAGLAKIIP PKEWKPRQTY DDIDDVVIPA PIQQVVTGQS GLFTQYNIQK KAMTVGEYRR LANSEKYCTP RHQDFDDL KYWKNLTFVS PIYGADISGS LYDDDVAQWN IGSLRTILDM VERECGTIIE GVNTPLYLFG MWKTTFAWHT EDMDLYSINY LHFGEPSKWY AIPPEHGKRL ERLAIGFFPG SSQGCDAFLR HKMTLISPII LKKYGIPFSR ITQEAGEFMI TFPYGYHAGF NHGFNCAEST NFATLRWIDY GKVATQCTCR KDMVKISMDV FVRILQPERY ELWKQGKDLT VLDHTRPTAL TSPELSSWSA SRASLKAKLL RRSRHRKRSQP KKPKEPDPKF PEGGTAGAAL LEEAGGSVKE EAGPEVDPEE EEEEPQPLPH GREAEAEED GRGKLRPTKA KSERKKKSFG LLPPQLPPPP AHFPSEEALW LPSPLEPPVL GPGPAAMEES PLPAPLNVVP PEVPSEELEA KPRPIIPMLY VVPRPGKAAF NQEHVSCQQA FEHFAQKGPT WKEPVSPMEL TGPEDGAASS GAGRMETKAR AGEGQAPSTF

## Product Details

---

SKLKMEIKKS RRHPLGRPPT RSPLSVVKQE ASSDEEASPF SGEEDVSDPD ALRPLLSLQW  
KNRAASFQAE RKFNAART EPYCAICTLF YPYCQALQTE KEAPIASLGE GCPATLPSKS  
RQKTRPLIPE MCFTSGGENT EPLPANSYIG DDGTSPLIAC GKCCQLQVHAS CYGIRPELVN  
EGWTCSRCAA HAWTAECCLC NLRGGALQMT TDRRWIHWIC AIAVPEARFL NVIERHPVDI  
SAIPEQRWKL KCVYCRKRMK KVSGACIQCS YEHCSFSFHV TCAHAAGVLM EPDDWPYVVS  
ITCLKHKSGG HAVQLLRAVS LGQVVITKNR NGLYYRCRVI GAASQTCYEV NFDDGSYSDN  
LYPESITSRD CVQLGPPSEG ELVELRWTDG NLYKAKFISS VTSHIYQVEF EDGSQLTVKR  
GDIFLLEEL PKRVRSLSL STGAPQEPAF SGEEAKAAKR PRVGTPLATE DSGRSQDYVA  
FVESLLQVQG RPGAPF

Cross-Reactivity:	Human
Characteristics:	Antibody reactive against mammalian transfected lysate.

## Target Details

---

Target:	KDM4B
Alternative Name:	JMJD2B ( <a href="#">KDM4B Products</a> )
Background:	Full Gene Name: jumonji domain containing 2B Synonyms: FLJ44906,KDM4B,KIAA0876
Gene ID:	23030
NCBI Accession:	<a href="#">NM_015015</a>
Pathways:	<a href="#">Warburg Effect</a>

## Application Details

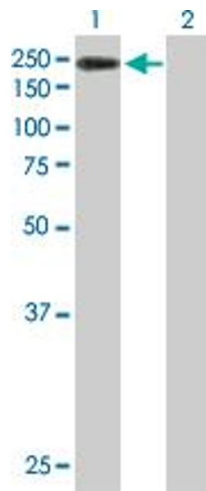
---

Application Notes:	Optimal working dilution should be determined by the investigator.
Restrictions:	For Research Use only

## Handling

---

Buffer:	In 1x PBS, pH 7.4
Handling Advice:	Aliquot to avoid repeated freezing and thawing.
Storage:	-20 °C
Storage Comment:	Store at -20°C or lower. Aliquot to avoid repeated freezing and thawing.



### Western Blotting

**Image 1.** Western Blot analysis of KDM4B expression in transfected 293T cell line by KDM4B MaxPab polyclonal antibody.

Lane 1: KDM4B transfected lysate(120.56 KDa).

Lane 2: Non-transfected lysate.